

# National Testing Agency

<b>Question Paper Name :</b>	IIFT MBA IB 24th Jan 2021 Shift 2
<b>Subject Name :</b>	IIFT MBA IB
<b>Creation Date :</b>	2021-01-24 19:04:21
<b>Duration :</b>	120
<b>Number of Questions :</b>	79
<b>Total Marks :</b>	300
<b>Display Marks:</b>	Yes

## IIFT MBA IB

<b>Group Number :</b>	1
<b>Group Id :</b>	8221011
<b>Group Maximum Duration :</b>	0
<b>Group Minimum Duration :</b>	120
<b>Show Attended Group? :</b>	No
<b>Edit Attended Group? :</b>	No
<b>Break time :</b>	0
<b>Group Marks :</b>	300
<b>Is this Group for Examiner? :</b>	No

## Section- I Quantitative Analysis

<b>Section Id :</b>	8221011
<b>Section Number :</b>	1
<b>Section type :</b>	Online
<b>Mandatory or Optional :</b>	Mandatory
<b>Number of Questions :</b>	25
<b>Number of Questions to be attempted :</b>	25

**Section Marks :** 75  
**Mark As Answered Required? :** Yes  
**Sub-Section Number :** 1  
**Sub-Section Id :** 8221011  
**Question Shuffling Allowed :** Yes

**Question Number : 1 Question Id : 8221011 Question Type : MCQ Option Shuffling : No Is Question Mandatory : No Correct Marks : 3 Wrong Marks : 1**

The product of the roots of the equation

$$\sqrt[3]{11 + 2x} + \sqrt[3]{11 - 2x} = 2$$

is approximately equal to :

1. 22
2. -27
3. 35
4. -33

**Options :**

8221011. 1  
8221012. 2  
8221013. 3  
8221014. 4

**Question Number : 2 Question Id : 8221012 Question Type : MCQ Option Shuffling : No Is Question Mandatory : No Correct Marks : 3 Wrong Marks : 1**

The probabilities of three mutually exclusive outcomes of an experiment  $0.25(1 - x)$ ,  $0.5(1 - 2x)$  and  $0.25(1 + 4x)$  respectively.

Which of the following holds for the value of  $x$  ?

1.  $-0.5 \leq x \leq 0.5$
2.  $0 \leq x \leq 0.5$
3.  $-0.75 \leq x \leq 0.25$
4.  $-0.25 \leq x \leq 0.5$

**Options :**

8221015. 1

8221016. 2

8221017. 3

8221018. 4

**Question Number : 3 Question Id : 8221013 Question Type : MCQ Option Shuffling : No Is Question Mandatory : No**

**Correct Marks : 3 Wrong Marks : 1**

Sumit stays in Noida in a joint family comprising of his parents, uncle, aunt, an elder sister and a cousin two years younger than him. Sumit completed his MBA in 2013, from a reputed B-School. That year, the average age of Sumit's family was 41. Sumit got married in 2015 and two years after he became father. If the average age of Sumit's family in 2019 remains same as in 2013, and Sumit is older than his wife by 3 years, at what age did Sumit graduate MBA ?

1. 31
2. 35
3. 38
4. 41

**Options :**

- 8221019. 1
- 82210110. 2
- 82210111. 3
- 82210112. 4

**Question Number : 4 Question Id : 8221014 Question Type : MCQ Option Shuffling : No Is Question Mandatory : No**

**Correct Marks : 3 Wrong Marks : 1**

Mr. Madhukar worked for 5 years in a multi-commodity trading company after graduating from a reputed B-School. He then resigned from his job and started an online garment export business. For his business Madhukar used Rs. 8,00,000/- of his own savings and borrowed Rs. 12,00,000/- from a private sector bank in April, the beginning month of the financial year. Meanwhile, RBI eased repo rate in May and banks passed on the benefits to the borrowers. As a result, Madhukar borrowed an additional Rs. 9,00,000/- after 4 months at an interest rate which is 10% lower than the interest rate of his earlier borrowing. If the total interest paid by Madhukar at the end of that year on both the loans is Rs. 1,39,200/-, what is the interest rate per annum on first borrowing ?

- 1. 6 percent
- 2. 7 percent
- 3. 8 percent
- 4. 9 percent

**Options :**

- 82210113. 1
- 82210114. 2
- 82210115. 3
- 82210116. 4

**Question Number : 5 Question Id : 8221015 Question Type : MCQ Option Shuffling : No Is Question Mandatory : No**

**Correct Marks : 3 Wrong Marks : 1**

Three friends Pradeep, Suresh and Subodh work in the same office. During an extended weekend they decided to go together on a family trip to Corbett National Park. They started from office in their own car but at different time and travelled in the same direction at speeds of 50 km/hr, 60 km/hr and 75 km/hr respectively. Suresh and Subodh overtook Pradeep at the same point. If Suresh started 90 minutes after Pradeep, how many minutes after Pradeep did Subodh start from the office?

1. 120
2. 150
3. 180
4. 210

**Options :**

82210117. 1

82210118. 2

82210119. 3

82210120. 4

**Question Number : 6 Question Id : 8221016 Question Type : MCQ Option Shuffling : No Is Question Mandatory : No**

**Correct Marks : 3 Wrong Marks : 1**

Surojit Ghosh left his IT job last year and started a food business with his wife Debjani. They named the business "Bong's Kitchen". Surojit takes  $4\frac{1}{5}$  hours more when he works alone compared to when he works jointly with his wife. On the other hand, Debjani takes  $28\frac{1}{5}$  hours more than what she takes when she works with Surojit. How long approximately will it take, Surojit to complete the business work alone ?

1. 6 hours
2. 9 hours
3. 12 hours
4. 15 hours

**Options :**

- 82210121. 1
- 82210122. 2
- 82210123. 3
- 82210124. 4

**Question Number : 7 Question Id : 8221017 Question Type : MCQ Option Shuffling : No Is Question Mandatory : No Correct Marks : 3 Wrong Marks : 1**

A fruit seller in a locality uses dishonest practice as follows :

- (i) He cheats on weight by 10 percent for every 1 kg weight.
- (ii) He pushes up the price of fruit by 15 percent and then gives a discount of 8 percent to the buyers for every kg sold.

Find the percentage profit of the fruit seller from sale of 1 kg. (Profit is defined as Revenue - Cost)

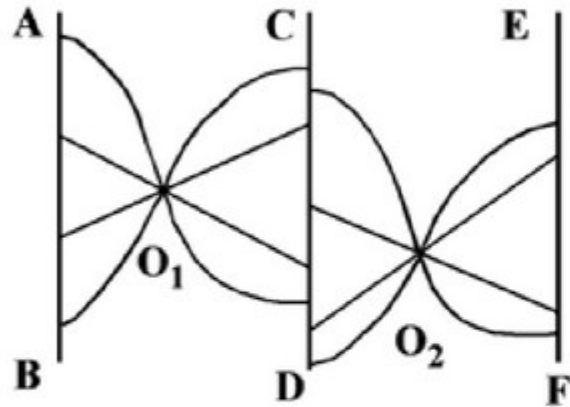
- 1. 18.95
- 2. 17.56
- 3. 16.04
- 4. 15.00

**Options :**

- 82210125. 1
- 82210126. 2
- 82210127. 3
- 82210128. 4

**Question Number : 8 Question Id : 8221018 Question Type : MCQ Option Shuffling : No Is Question Mandatory : No Correct Marks : 3 Wrong Marks : 1**

Refer to the figure given below. AB, CD and EF are three parallel paths. A person starts from AB to reach EF by moving in four steps - moving from AB to  $O_1$  in step 1, from  $O_1$  to CD in step 2, from CD to  $O_2$  in step 3 and from  $O_2$  to EF in step 4. If he takes a curved path in one step, he cannot take a curved path in the next step. In how many ways the person can reach EF from AB ?



1. 128
2. 256
3. 32
4. 64

**Options :**

82210129. 1  
 82210130. 2  
 82210131. 3  
 82210132. 4

**Question Number : 9 Question Id : 8221019 Question Type : MCQ Option Shuffling : No Is Question Mandatory : No Correct Marks : 3 Wrong Marks : 1**

Consider the equation  $(x - a)(x - b) = 0$  which has two identical roots. What should be the condition under which  $(x - a)(x - b) = c$  has two distinct real roots ?

1.  $c > 0$
2.  $a + b > 0$
3.  $c(a + b) > 0$
4.  $ab > 0$

**Options :**

82210133. 1

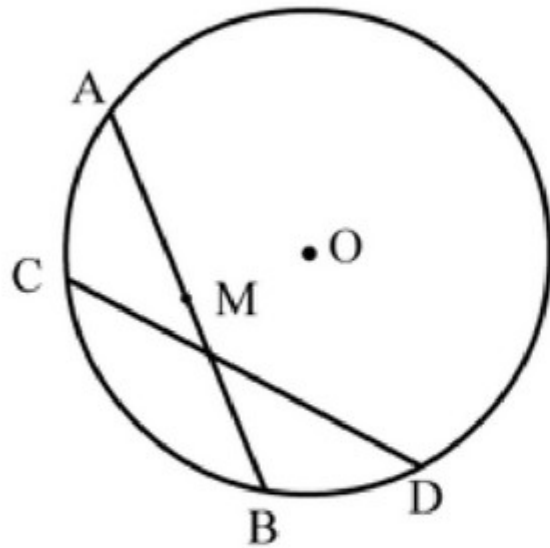
82210134. 2

82210135. 3

82210136. 4

**Question Number : 10 Question Id : 82210110 Question Type : MCQ Option Shuffling : No Is Question Mandatory : No Correct Marks : 3 Wrong Marks : 1**

As shown in the diagram, Ram started from point A along the chord AB and Shyam started from D along the chord DC. AB and DC are two equal chords. Ram and Shyam move with the same speed and started at the same time. After some time, Ram reached "M" which is the midpoint of AB. Ram and Shyam now make an angle  $60^\circ$  at the centre O. If the distance between Ram and Shyam is 6 m now, then how much distance each will walk before they meet each other ?



1.  $6\sqrt{3}$
2.  $3\sqrt{3}$
3.  $2\sqrt{3}$
4.  $5\sqrt{3}$

**Options :**

82210137. 1

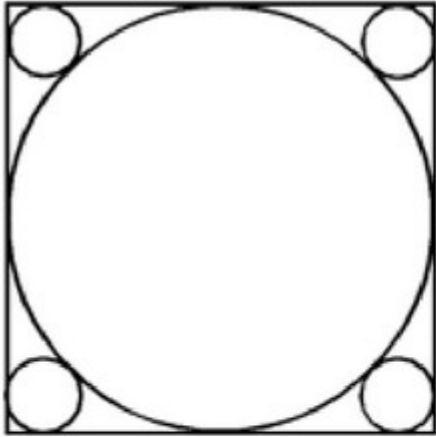
82210138. 2

82210139. 3

82210140.4

**Question Number : 11 Question Id : 82210111 Question Type : MCQ Option Shuffling : No Is Question Mandatory : No Correct Marks : 3 Wrong Marks : 1**

In the figure, a circle of radius 2 cm is inscribed in a square. There are four smaller circles at each of the corner of the square. What is the total area covered by all the five circles ?



1.  $4\pi + 4\pi(6 - 4\sqrt{2})^2 cm^2$
2.  $4\pi + 4\pi(3 - 2\sqrt{2})^2 cm^2$
3.  $4\pi + 4\pi(12 - 8\sqrt{2})^2 cm^2$
4.  $4\pi + 4\pi(9 - 6\sqrt{2})^2 cm^2$

**Options :**

82210141. 1  
82210142. 2  
82210143. 3  
82210144. 4

**Question Number : 12 Question Id : 82210112 Question Type : MCQ Option Shuffling : No Is Question Mandatory : No Correct Marks : 3 Wrong Marks : 1**

An economic survey of total 1000 participants was carried out in Delhi, Mumbai, Kolkata and Chennai about their wealth. 300 participants reported possessing both a house and a car. 500 participants reported possessing both a house and a motorbike. 200 participants reported possessing a house together with a motorbike and a car. Find the number of participants who possess both a house and a car, or possess both a house and a motorbike.

1. 400
2. 200
3. 600
4. 800

**Options :**

- 82210145. 1
- 82210146. 2
- 82210147. 3
- 82210148. 4

**Question Number : 13 Question Id : 82210113 Question Type : MCQ Option Shuffling : No Is Question Mandatory : No Correct Marks : 3 Wrong Marks : 1**

Saudi Aramco and Reliance Industries entered into a joint venture where Saudi Aramco invested 20 billion dollars and Reliance Industries invested 30 billion dollars. The ownership ratio is always equal to the investment ratio. After 1 year, the venture made a profit of 6 billion dollars which they reinvested. Now Reliance Industries wants to increase its ownership to 75%, how much it should pay to Saudi Aramco in billion dollars ?

1. 12.4
2. 8.4
3. 10.4
4. 14.4

**Options :**

82210149. 1

82210150. 2

82210151. 3

82210152. 4

**Question Number : 14 Question Id : 82210114 Question Type : MCQ Option Shuffling : No Is Question Mandatory : No Correct Marks : 3 Wrong Marks : 1**

Maruti-Suzuki Company manufactures the Ciaz cars at its Manesar facility. The company employs labour and capital/machine as inputs in a 2 : 1 ratio of their quantities. The cost of one unit of labour (think it as wage per hour) is 500 rupees and the cost of one unit of capital (machine running cost per hour) is 1500 rupees. The total labour and capital cost for the monthly production is 5 crore rupees. Due to economic slowdown, the company has decided to reduce monthly production to half. Meanwhile, the labour cost has decreased by 20% and the capital cost has gone up by 20%. Find the total capital and labour cost the company would now incur for the monthly production.

1. 2.4 crores
2. 2.6 crores
3. 2.8 crores
4. 3 crores

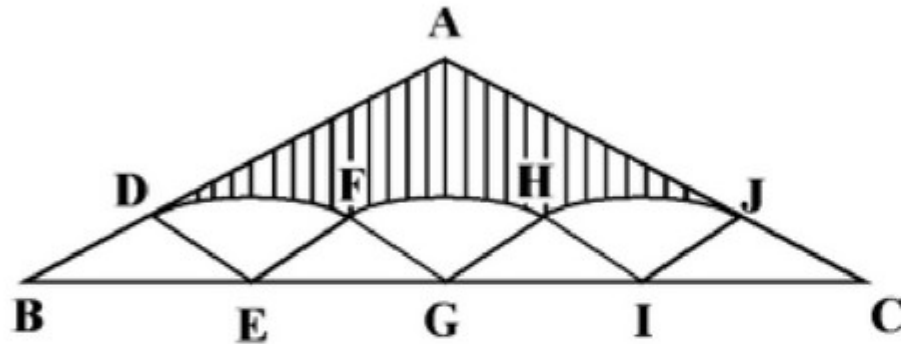
**Options :**

- 82210153. 1
- 82210154. 2
- 82210155. 3
- 82210156. 4

**Question Number : 15 Question Id : 82210115 Question Type : MCQ Option Shuffling : No Is Question Mandatory : No Correct Marks : 3 Wrong Marks : 1**

ABC is an isosceles triangle. BDE, EFG, GHI and IJC are four equal isosceles triangles inside ABC triangle.

D and F, F and H, H and J are connected by circular arcs. The angle ABC is 30 degrees and BE is 1 m. What is the area of the shaded region ?



1.  $\sqrt{6} - \frac{\pi}{6} m^2$
2.  $\sqrt{5} - \frac{\pi}{5} m^2$
3.  $\sqrt{3} - \frac{\pi}{3} m^2$
4.  $\sqrt{7} - \frac{\pi}{7} m^2$

Options :

82210157. 1  
 82210158. 2  
 82210159. 3  
 82210160. 4

Question Number : 16 Question Id : 82210116 Question Type : MCQ Option Shuffling : No Is Question Mandatory : No

Correct Marks : 3 Wrong Marks : 1

If  $16^x = \frac{64}{256^y}$  and  $9^x = \frac{9}{3^y}$ , then the values of  $x$  and  $y$  are respectively,

1.  $\frac{5}{6}$  and  $\frac{1}{2}$
2.  $\frac{7}{6}$  and  $\frac{1}{3}$
3.  $\frac{5}{6}$  and  $\frac{1}{3}$
4.  $\frac{11}{6}$  and  $\frac{1}{3}$

Options :

82210161. 1

82210162. 2

82210163. 3

82210164. 4

Question Number : 17 Question Id : 82210117 Question Type : MCQ Option Shuffling : No Is Question Mandatory : No

Correct Marks : 3 Wrong Marks : 1

An owner of a grocery shop purchases two varieties of grain. The price of first variety is twice the price of the second one. He mixes both the varieties and sells the mixture at the price of Rs. 28 per kg, making a profit of 25%. If the ratio of first variety of grain and the second variety of grain in the mixture is 2:3, find the price of first variety of grain.

1. Rs. 16/kg.
2. Rs. 24/kg.
3. Rs. 32/kg.
4. Rs. 64/kg.

**Options :**

- 82210165. 1
- 82210166. 2
- 82210167. 3
- 82210168. 4

**Question Number : 18 Question Id : 82210118 Question Type : MCQ Option Shuffling : No Is Question Mandatory : No Correct Marks : 3 Wrong Marks : 1**

A Financial Analyst estimates that the probability that the economy will experience recession in next one year is 30%. He also believes that in case of recession, the probability that his mutual funds will increase in value is 20%. He also believes that if there is no recession the probability that the value of mutual funds will increase in value is 75%. Find the probability that mutual funds value will increase.

1. 0.285
2. 0.525
3. 0.585
4. 0.60

**Options :**

- 82210169. 1
- 82210170. 2
- 82210171. 3
- 82210172. 4

**Question Number : 19 Question Id : 82210119 Question Type : MCQ Option Shuffling : No Is Question Mandatory : No Correct Marks : 3 Wrong Marks : 1**

A water tanker can be filled by 2 pipes A & B separately in 16 min & 32 min respectively. Outlet of the tanker is partially open and it can empty the full tanker completely in 1 hour 4 min. Pipes A & B were opened simultaneously for 9 min to fill the tanker but the partially open outlet was not closed. After 9 min the pipes A & B were closed and the tanker then went to Mohan's house, 6 km away to deliver water. If the tanker moved at a constant speed of 36 km/hr, approximately what percentage of tanker was full, when it reached Mohan's house?

- 1. 55%
- 2. 63%
- 3. 58%
- 4. None of the options

**Options :**

- 82210173. 1
- 82210174. 2
- 82210175. 3
- 82210176. 4

**Question Number : 20 Question Id : 82210120 Question Type : MCQ Option Shuffling : No Is Question Mandatory : No Correct Marks : 3 Wrong Marks : 1**

Two cities Mathura and Agra, 48 kms apart, are located on the bank of River Yamuna. A motorboat goes from Mathura to Agra and returns back as soon as possible. Yamuna flows at a speed of 6 km/hr. The motorboat completes the trip from Mathura to Agra and back in not more than 6 hours. Assuming the motorboat does not halt at Agra, what should be the minimum speed of motorboat in still water?

1. 16 km/hr
2. 18 km/hr
3. 25 km/hr
4. 27 km/hr

**Options :**

- 82210177. 1
- 82210178. 2
- 82210179. 3
- 82210180. 4

**Question Number : 21 Question Id : 82210121 Question Type : MCQ Option Shuffling : No Is Question Mandatory : No Correct Marks : 3 Wrong Marks : 1**

Suhani, an enterprising lady took the loan from M/s Koramattam Finance against her gold ornaments at a simple interest of 12% per annum for 2 years. She, then, loaned 50% of the amount received from M/s Koramattam Finance, to Vishamber at the rate of 16% per annum compounded half yearly for 2 years and the remaining amount to Kalawati at the rate of 12% per annum compounded annually for 2 years. What was the approximate percentage earning of Suhani at the end of 2 years ?

1. 42%
2. 28%
3. 50%
4. 60%

**Options :**

82210181. 1

82210182. 2

82210183. 3

82210184. 4

**Question Number : 22 Question Id : 82210122 Question Type : MCQ Option Shuffling : No Is Question Mandatory : No Correct Marks : 3 Wrong Marks : 1**

At what time between 10.00 AM and 11.00 AM, the minute hand and the hour hand of a watch would make an angle of  $180^\circ$  ?

1. 10.20 AM
2. 10.22 AM
3. 10.23 AM
4. 10.25 AM

**Options :**

82210185. 1

82210186. 2

82210187. 3

82210188. 4

**Question Number : 23 Question Id : 82210123 Question Type : MCQ Option Shuffling : No Is Question Mandatory : No Correct Marks : 3 Wrong Marks : 1**

ABCD is a parallelogram whose diagonals are parallel to the lines  $2y - x - 5 = 0$  and  $y + 2x - 7 = 0$  respectively.

Then ABCD is -

1. Cyclic quadrilateral
2. Rectangle
3. Cube
4. Rhombus

**Options :**

82210189. 1

82210190. 2

82210191. 3

82210192. 4

**Question Number : 24 Question Id : 82210124 Question Type : MCQ Option Shuffling : No Is Question Mandatory : No Correct Marks : 3 Wrong Marks : 1**

A man, from the foot of the building P, walks towards the building Q. After walking for 2 mts, he finds that buildings P and Q make an angle of elevation of  $60^\circ$  and  $30^\circ$  respectively. If building Q is 1.5 mts high, find the distance between the tops of both buildings P and Q.

1. 5 mts
2. 4 mts
3.  $(2\sqrt{3} - 1.5)$  mts
4.  $(2 - 1.5\sqrt{3})$  mts

**Options :**

82210193. 1

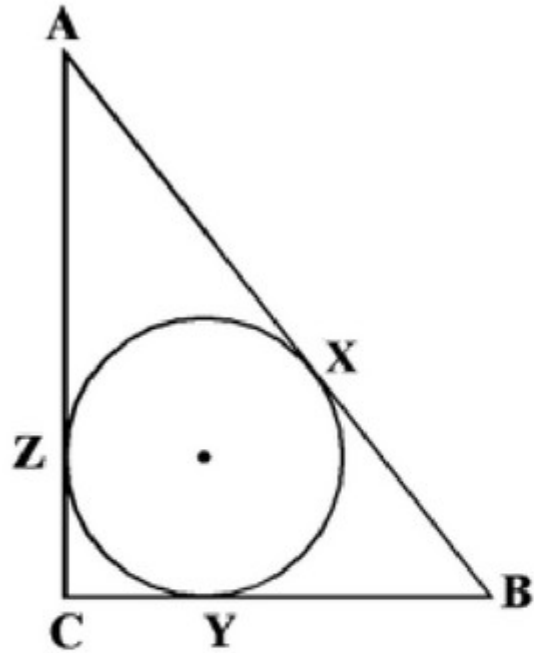
82210194. 2

82210195. 3

82210196. 4

**Question Number : 25 Question Id : 82210125 Question Type : MCQ Option Shuffling : No Is Question Mandatory : No Correct Marks : 3 Wrong Marks : 1**

A circle is inscribed in a right angled isosceles triangle. O is the centre of the circle which touches the triangle ABC at X, Y, Z. If  $AB = 7\sqrt{2}$  cm, then the ratio of AZ : BX : CY -



1.  $1 : (\sqrt{2} - 1) : 1$
2.  $1 : 1 : (\sqrt{2} - 1)$
3.  $1 : 1 : \left(\sqrt{2} - \frac{1}{2}\right)$
4.  $1 : \left(\sqrt{2} - \frac{1}{2}\right) : 1$

**Options :**

82210197. 1

82210198. 2

82210199. 3

822101100. 4

## Section- II Reading Comprehension and Verbal Ability

Section Id :	8221012
Section Number :	2
Section type :	Online
Mandatory or Optional :	Mandatory
Number of Questions :	23
Number of Questions to be attempted :	23
Section Marks :	105
Mark As Answered Required? :	Yes
Sub-Section Number :	1
Sub-Section Id :	8221012
Question Shuffling Allowed :	Yes

Question Id : 82210126 Question Type : COMPREHENSION Sub Question Shuffling Allowed : Yes Group Comprehension Questions : No

Question Numbers : (26 to 29)

Question Label : Comprehension

**Read the given passage and answer the 4 questions that follow :**

The Reverend Jim Jones was the founder and leader of the People's Temple. In 1978 Jones, facing charges of tax evasion, moved most of his one thousand followers from San Francisco to a small settlement in Guyana, which he named Jonestown. Facing a federal investigation for reported acts of child abuse and torture, Jones decided that his followers should poison their children and then themselves. They prepared vats of poison. A few people resisted; a few others shouted out their protest, but they were silenced. Following Jones's orders, and the social pressures imposed by one another, mothers and fathers duly poisoned their children. Then they poisoned themselves. Their bodies were found arm in arm, lying together. Econs (and some economists we know) are pretty unsociable creatures. They communicate with others if they can gain something from the encounter, they care about their reputations, and they will learn from others if actual information can be obtained, but Econs are not followers of fashion. Their hemlines would not go up and down except for practical reasons, and ties, if they existed at all in a world of Econs, would not grow narrower and wider simply as a matter of style. (By the way, ties were originally used as napkins; they actually had a function.) Humans, on the other hand, are frequently nudged by other Humans. Sometimes massive social changes, in markets and politics alike, start with a small social nudge.

Humans are not exactly lemmings but they are easily influenced by the statements and deeds of

lemmings are not exactly lemmings, but they are easily influenced by the actions and words of others. (Again by the way, lemmings do not really commit mass suicide by following one another into the ocean. Our widely shared and somewhat defamatory beliefs about lemmings are based on an all-too-human urban legend—that is, people believe this because they are following other people. By contrast, the tale of mass suicide at Jonestown is no legend.) If you see a movie scene in which people are smiling, you are more likely to smile yourself (whether or not the movie is funny); yawns are contagious, too.

Conventional wisdom has it that if two people live together for a long time, they start to look like each other. This bit of folk wisdom turns out to be true. (For the curious: they grow to look alike partly because of nutrition—shared diets and eating habits—but much of the effect is simple imitation of facial expressions.) In fact couples who end up looking alike also tend to be happier!

Here, we try to understand how and why social influences work. An understanding of those influences is important in our context for two reasons. First, most people learn from others. This is usually good, of course. Learning from others is how individuals and societies develop. But many of our biggest misconceptions also come from others. When social influences have caused people to have false or biased beliefs, then some nudging may help. The second reason why this topic is important for our purposes is that one of the most effective ways to nudge (for good or evil) is via social influence. In Jonestown, that influence was so strong that an entire population committed suicide. But social influences have also created miracles, large and small. In many cities, including ours, dog owners now carry plastic bags when they walk their dogs, and strolling through the park has become much more pleasant as a result. This has happened even though the risk of being fined for unclean dog walking is essentially zero. Choice architects need to know how to encourage other socially beneficial behavior, and also how to discourage events like the one that occurred in Jonestown. Social influences come in two basic categories. The first involves information. If many people do something or think something, their actions and their thoughts convey information about what might be best for you to do or think. The second involves peer pressure. If you care about what other people think about you (perhaps in the mistaken belief that they are paying some attention to what you are doing—see below), then you might go along with the crowd to avoid their wrath or curry their favor. For a quick glance at the power of social nudges, consider just a few research findings:

1. Teenage girls who see that other teenagers are having children are more likely to become pregnant themselves.
2. Obesity is contagious. If your best friends get fat, your risk of gaining weight goes up.
3. Broadcasters mimic one another, producing otherwise inexplicable fads in programming. (Think reality television, *American Idol* and its siblings, game shows that come and go, the rise and fall and rise of science fiction, and so forth.)
4. The academic effort of college students is influenced by their peers, so much so that the random assignments of first-year students to dormitories or roommates can have big consequences for their grades and hence on their future prospects. (Maybe parents should worry less about which college their kids go to and more about which roommate they get.)
5. Federal judges on three-judge panels are affected by the votes of their colleagues. The typical

2. Federal judges on three-judge panels are affected by the votes of their colleagues. The typical Republican appointee shows pretty liberal voting patterns when sitting with two Democratic appointees, and the typical Democratic appointee shows pretty conservative voting patterns when sitting with two Republican appointees. Both sets of appointees show far more moderate voting patterns when they are sitting with at least one judge appointed by a president of the opposing political party.

The bottom line is that Humans are easily nudged by other Humans. Why? One reason is that we like to conform.

### Sub questions

Question Number : 26 Question Id : 82210127 Question Type : MCQ Option Shuffling : No Is Question Mandatory : No

Correct Marks : 3 Wrong Marks : 1

Main idea in the passage is about:

1. Causes and prevention of mass suicide.
2. Mindset problems of some economists.
3. Contagious nature of human emotion.
4. Behavior is the result of following the herd.

### Options :

822101101. 1

822101102. 2

822101103. 3

822101104. 4

Question Number : 27 Question Id : 82210128 Question Type : MCQ Option Shuffling : No Is Question Mandatory : No

Correct Marks : 3 Wrong Marks : 1

Identify the CORRECT statement:

1. Obesity is sporadic.
2. Learning from others is good as it helps in the development of individuals and societies.
3. Similar looking couples seldom aperty each other's facial expression.
4. Obesity may often be the result of information provided by peers.

**Options :**

- 822101105. 1
- 822101106. 2
- 822101107. 3
- 822101108. 4

**Question Number : 28 Question Id : 82210129 Question Type : MCQ Option Shuffling : No Is Question Mandatory : No Correct Marks : 3 Wrong Marks : 1**

Identify the CORRECT statement:

1. Inaccurate nudging occurs as a result of information that tells about the socially accepted behavior.
2. Successful nudging occurs as a result of the desire to avoid disapproval of others.
3. Nudging is pluralistic ignorance that leads to peer pressure.
4. Collective behaviours in a society prevents individuals from getting fined for inappropriate actions.

**Options :**

- 822101109. 1
- 822101110. 2
- 822101111. 3
- 822101112. 4

Question Number : 29 Question Id : 82210130 Question Type : MCQ Option Shuffling : No Is Question Mandatory : No  
Correct Marks : 3 Wrong Marks : 1

Given below are four statements

**Statement I :** Republican appointees are conservative.

**Statement II :** Democratic appointees are liberal.

**Statement III :** Three judge panels are known for inaccurate decisions.

**Statement IV :** Dormitory students are better performers in college.

In light of the above statements, choose the *most appropriate* answer from the options given below

1. (III) and (IV) are correct.
2. (III) and (IV) are incorrect.
3. (I) and (II) are incorrect.
4. (I) and (III) are correct.

**Options :**

822101113. 1

822101114. 2

822101115. 3

822101116. 4

**Sub-Section Number :**

2

**Sub-Section Id :**

8221013

**Question Shuffling Allowed :**

Yes

**Question Id : 82210131 Question Type : COMPREHENSION Sub Question Shuffling Allowed : Yes Group Comprehension Questions :**  
No

**Question Numbers : (30 to 33)**

**Question Label : Comprehension**

***Read the given passage and answer the 4 questions that follow :***

Cultural arguments once loomed large in explanations of the ways in which countries differed economically and politically. Economists mostly abandoned such reasoning in the 20th century, not only because it provided cover for racists but also because of its lack of explanatory power. In 1970 Robert Solow, a Nobel prize winner, quipped that attempts to explain growth with variables such as culture generally ended up “in a blaze of amateur sociology”. This position is changing, however, and not before time. A better grasp of how cultures work may be needed to understand modern political economy.

The responsible intellectual use of cultural argument begins with clear terminology. In "A Culture of Growth", published in 2016, Joel Mokyr, an economic historian at Northwestern University describes culture as a set of beliefs, values, and preferences, capable of affecting behaviour, that are socially (not genetically) transmitted and that are shared by some subset of society". Economists typically treat rational self-interest as the lodestar of human behaviour. But Mr Mokyr recognises that acquired social codes also influence individual choices, and thus broader economic activity. Culture is not immutable, as those who ascribe countries' diverging fates to deep-rooted cultural attributes often suggest. It evolves as the ideas and influence of different groups shift.

Cultural evolution is essential to the thesis of "A Culture of Growth", which attempts to explain why sustained growth began where and when it did. Mr Mokyr says that factors often credited with kick-starting industrialisation- such as capital accumulation and the cost and supply of certain kinds of labour- may be necessary but are not sufficient. The true catalyst was a continent-wide evolution in beliefs. In Europe between the 16th and 18th centuries, a group of intellectuals often called the “Republic of Letters” groped their way towards a bold new view of nature and knowledge. Francis Bacon, an English intellectual and early contributor to the movement, thought that through disinterested and open inquiry, nature's secrets could be understood and then manipulated to the benefit of humankind. Such views helped nurture the Scientific Revolution and the Enlightenment, but also percolated through society, influencing behaviour. Once the notion became widespread



objective knowledge was possible and could be used to improve people's lives, the emergence of self-sustaining economic growth was near-inevitable.

In a recent essay Enrico Spolaore of Tufts University writes that Mr Mokyr's ideas show how economists might make better use of culture. He does not simply argue that Europe industrialized first because of a particular European cultural way of being. Rather, he identifies a specific cultural change - the rise of an evidence-based, humanistic approach to scientific inquiry- which led to a shift in behaviour that enabled industrialisation. He contrasts this with, for example, China, where rationalistic schools of philosophy such as Mohism were eclipsed in intellectual circles by tradition-venerating Confucianism. China's fate is not down to something inherent in Chinese culture. Rather, history unfolded one way in one place, and another in another.

#### Sub questions

**Question Number : 30 Question Id : 82210132 Question Type : MCQ Option Shuffling : No Is Question Mandatory : No Correct Marks : 3 Wrong Marks : 1**

In "A Culture of Growth" Mr Mokyr tries to analyse :

1. Why did sustained economic growth evade Europe?
2. What is the cause of crisis in the Eurozone?
3. Why did Industrial Revolution begin in Europe?
4. What social transformations are occurring in Europe today?

#### Options :

- 822101117. 1
- 822101118. 2
- 822101119. 3
- 822101120. 4

**Question Number : 31 Question Id : 82210133 Question Type : MCQ Option Shuffling : No Is Question Mandatory : No**



**Correct Marks : 3 Wrong Marks : 1**

According to Mr Mokyr's thesis :

1. Culture affects behaviour and thus economic activity in a society.
2. Acquired social codes influence individual choices and therefore economic activity.
3. Factors usually associated with kick starting industrialisation are not sufficient to explain economic activity.
4. All the options hold.

**Options :**

- 822101121. 1
- 822101122. 2
- 822101123. 3
- 822101124. 4

**Question Number : 32 Question Id : 82210134 Question Type : MCQ Option Shuffling : No Is Question Mandatory : No**

**Correct Marks : 3 Wrong Marks : 1**

Enrico Spolaore believes :

1. A cultural change that supported scientific enquiry was behind Europe's industrialisation
2. A rationalist school of philosophy could never rise in Europe
3. A rationalist school of philosophy thrived in China
4. Confucianism got eclipsed by Mohism in China

**Options :**

- 822101125. 1
- 822101126. 2
- 822101127. 3
- 822101128. 4

Question Number : 33 Question Id : 82210135 Question Type : MCQ Option Shuffling : No Is Question Mandatory : No  
Correct Marks : 3 Wrong Marks : 1

The following statement best captures the theme of the passage:

1. Scientific revolution and enlightenment in Europe
2. Confucianism and Mohism in China
3. History unfolds in different ways in different countries
4. A society's values and beliefs matter for its economy

Options :

822101129. 1

822101130. 2

822101131. 3

822101132. 4

Sub-Section Number :

3

Sub-Section Id :

8221014

Question Shuffling Allowed :

Yes

Question Id : 82210136 Question Type : COMPREHENSION Sub Question Shuffling Allowed : Yes Group Comprehension Questions :  
No

Question Numbers : (34 to 37)

Question Label : Comprehension

***Read the passage and answer the 4 questions that follow :***

To say that all individuals are embedded in and the product of society is banal. Obama rises above banality by means of fallacy: equating society with government, the collectivity with the state. Of course we are shaped by our milieu. But the most formative, most important influence on the individual is not government. It is civil society, those elements of the collectivity that lie outside government: family, neighborhood, church, Rotary club, PTA, the voluntary associations that Tocqueville understood to be the genius of America and source of its energy and freedom. Moreover, the greatest threat to a robust, autonomous civil society is the ever-growing Leviathan state and those

like Obama who see it as the ultimate expression of the collective. Obama compounds the fallacy by declaring the state to be the font of entrepreneurial success. How so? It created the infrastructure—roads, bridges, schools, Internet—off which we all thrive. Absurd. We don't credit the Swiss postal service with the Special Theory of Relativity because it transmitted Einstein's manuscript to the *Annalen der Physik*. Everyone drives the roads, goes to school, uses the mails. So did Steve Jobs. Yet only he created the Mac and the iPad.

Obama's infrastructure argument is easily refuted by what is essentially a controlled social experiment. Roads and schools are the constant. What's variable is the energy, enterprise, risk-taking, hard work and genius of the individual. It is therefore precisely those individual characteristics, not the communal utilities that account for the different outcomes. The ultimate Obama fallacy, however, is the conceit that belief in the value of infrastructure—and willingness to invest in its creation and maintenance—is what divides liberals from conservatives.

More nonsense. Infrastructure is not a liberal idea, nor is it particularly new. The Via Appia was built 2,300 years ago. The Romans built aqueducts, too. And sewers. Since forever, infrastructure has been consensually understood to be a core function of government. The argument between left and right is about what you do beyond infrastructure. It's about transfer payments and redistributionist taxation, about geometrically expanding entitlements, about tax breaks and subsidies to induce actions pleasing to central planners. It's about free contraceptives for privileged students and welfare without work—the latest Obama entitlement-by-decree that would fatally undermine the great bipartisan welfare reform of 1996.

What divides liberals and conservatives is not roads and bridges but Julia's world, an Obama campaign creation that may be the most self-revealing parody of liberalism ever conceived. It's a series of cartoon illustrations in which a functional Julia is swaddled and subsidized throughout her life by an all-giving government of bottomless pockets and "Queen for a Day" magnanimity. At every stage, the state is there to provide—preschool classes and cut-rate college loans, birth control and maternity care, business loans and retirement. The only time she's on her own is at her grave site. Julia's world is totally atomized. It contains no friends, no community and, of course, no spouse. Who needs one? She's married to the provider state. Or to put it slightly differently, the "Life of Julia" represents the paradigmatic Obama political philosophy: citizen as orphan child. For the conservative,

providing for every need is the duty that government owes to actual orphan children. Not to supposedly autonomous adults. Beyond infrastructure, the conservative sees the proper role of government as providing not European-style universal entitlements but a firm safety net, meaning Julia-like treatment for those who really cannot make it on their own—those too young or too old, too mentally or physically impaired, to provide for themselves.

Limited government so conceived has two indispensable advantages. It avoids inexorable European-style national insolvency. And it avoids breeding debilitating individual dependency. It encourages and celebrates character, independence, energy, hard work as the foundations of a free society and a thriving economy—precisely the virtues Obama discounts and devalues in his accounting of the wealth of nations.

#### Sub questions

Question Number : 34 Question Id : 82210137 Question Type : MCQ Option Shuffling : No Is Question Mandatory : No  
Correct Marks : 3 Wrong Marks : 1

With reference to the passage, which of following statement is true?

1. Liberals conceived the idea of providing infrastructure to the citizens.
2. Conservatives believe that state needs to facilitate deserving sections of society.
3. Leviathan state helps in nurturing the dreams of a free and prosperous society.
4. Hardwork and genius is constant for building thriving society.

#### Options :

- 822101133. 1
- 822101134. 2
- 822101135. 3
- 822101136. 4

Question Number : 35 Question Id : 82210138 Question Type : MCQ Option Shuffling : No Is Question Mandatory : No

**Correct Marks : 3 Wrong Marks : 1**

According to the passage, the greatest threat to the civil society is:

1. The infrastructure created by the state
2. Great and populist leaders like Obama
3. The state's role as a provider state
4. Not giving credit to the government for undertaking welfare projects

**Options :**

- 822101137. 1
- 822101138. 2
- 822101139. 3
- 822101140. 4

**Question Number : 36 Question Id : 82210139 Question Type : MCQ Option Shuffling : No Is Question Mandatory : No Correct Marks : 3 Wrong Marks : 1**

The primary objective of the passage is to:

1. Praise the policy of Obama government
2. Present an argument for a provider government
3. Discuss the role and duties of a Government
4. Assess the differences between liberals and conservatives regarding their political philosophy only

**Options :**

- 822101141. 1
- 822101142. 2
- 822101143. 3
- 822101144. 4

**Question Number : 37 Question Id : 82210140 Question Type : MCQ Option Shuffling : No Is Question Mandatory : No**



Correct Marks : 3 Wrong Marks : 1

According to the passage, which of the following statement is false?

1. Leviathan state is not a harbinger of prosperity.
2. Building Infrastructure is not a liberal idea.
3. European governments do not provide privileges to all.
4. Provider state debilitates individual character.

Options :

822101145. 1

822101146. 2

822101147. 3

822101148. 4

Sub-Section Number :

4

Sub-Section Id :

8221015

Question Shuffling Allowed :

Yes

Question Id : 82210141 Question Type : COMPREHENSION Sub Question Shuffling Allowed : Yes Group Comprehension Questions : No

Question Numbers : (38 to 41)

Question Label : Comprehension

**Read the passage and answer the 4 questions that follow :**

As Western holiday makers escape their daily grind and head to the beach this summer, a concern is likely to resurface- literally really, if it washes up on the pristine sand in front of them. In the past two years plastic litter in the ocean seems to have eclipsed other environmental anxieties among rich-world consumers. Harrowing images of sea life ensnared in plastic bags, as depicted in “Blue Planet II”, a popular British television series from 2017 presented by Sir David Attenborough, would be enough to make any one choke on the plastic straw in their piña colada-if, that is, you were offered one. Politicians everywhere are responding to voters’ demands by banning straws, stirrers and other single-use plastics. The UN says that last year 127 countries had restrictions on plastic bags. This month Panama became the first Central American country to outlaw them. Britain is considering a tax on

plastic packaging made with less than 50% recycled content. In March 200 members of the European Parliament backed a law that would require 90% of plastic bottles to be recycled by 2029. Just 35 voted against.

Given the environmental footprint of substitutes like cotton bags, aluminium cans or paper boxes- which often require more energy and water to make and transport than plastic equivalents- new regulations could in fact end up doing harm to the planet. Nonetheless the plastics industry can expect ever more curbs on its products, a trend that will force businesses involved to reshape. Bottles, boxes, films and the like consume nearly half of global output of the polymers on which they rely. Many companies in the \$375bn plastic-packaging value chain-which comprises producers of oil and gas (the main feedstock), petrochemical giants packaging firms and consumer brands-look ill-prepared.

Companies at either end of the chain are the least vulnerable. Beverage-makers will happily switch from oil-derived plastic to recycled stuff for their bottles-or to aluminium cans-so long as the numbers add up (which they do when high oil prices push up the cost of virgin plastic). Even so, ExxonMobil or Coca-Cola cannot relax. Seema Suchak of Schroders, an asset manager, estimates that fizzy-drinks firms that fail to reduce their reliance on virgin plastics could see annual profits shrink by 5% over the next decade or so because of regulations and taxes spurred by the consumer backlash. According to Paul Bjacek of Accenture, a consultancy, recycling all plastic packaging, rather than the 1% that is reused today could cut annual growth in demand for oil and gas from 1% to 0.5% by 2040 as recycled materials gain market share.

Plastic packaging firms could suffer more. Credit-raters at Moody's have warned that Britain's proposed tax on plastic bottles could hurt their makers by discouraging use by consumer goods companies and driving up the cost of recycled plastic, a scarce raw material as recycling rates are low. Ms Suchak looked at five big makers of plastic packaging and found that the pre-tax profits of four of them could fall by 11-33% in the medium term if they stick with virgin plastics. Amcor, an Australian giant, lists environmental concerns as the number-one risk in its latest annual report.

Then there is the petrochemicals industry. In a much-cited analysis from 2016, consultants at McKinsey calculated that the value of plastic disposed after a single use is \$80bn-120bn a year. Reducing the number could benefit society but harm purveyors of the virgin materials. Last year Spencer Dale, chief economist of BP, a British oil giant, estimated that more plastics regulation could reduce demand for petrochemicals by a sixth in the next 20 years. Around a quarter of the revenues of

Germany's BASF DowDuPont of America come from plastic. Both could suffer.

**Sub questions**

**Question Number : 38 Question Id : 82210142 Question Type : MCQ Option Shuffling : No Is Question Mandatory : No Correct Marks : 3 Wrong Marks : 1**

The correct sequence in the plastic packaging value chain is:

1. Oil Companies, Petrochemical Companies, Packaging Companies, and Consumer Products Companies
2. Petrochemical Companies, Oil Companies, Packaging Companies, and Consumers Products Companies
3. Oil Companies, Petrochemical Companies, Consumer Products Companies, and Packaging Companies
4. Consumer Product Companies, Oil Companies, Petrochemicals Companies, and Packaging Companies

**Options :**

- 822101149. 1
- 822101150. 2
- 822101151. 3
- 822101152. 4

**Question Number : 39 Question Id : 82210143 Question Type : MCQ Option Shuffling : No Is Question Mandatory : No Correct Marks : 3 Wrong Marks : 1**

The new regulations on Plastic Packaging could end up doing more harm to the planet because:

1. It will disrupt the plastic packaging value chain.
2. The prices of consumer products will increase.
3. Environmental footprints of substitutes is higher.
4. Recycled plastic is not safe to use.

**Options :**

- 822101153. 1
- 822101154. 2
- 822101155. 3
- 822101156. 4

**Question Number : 40 Question Id : 82210144 Question Type : MCQ Option Shuffling : No Is Question Mandatory : No Correct Marks : 3 Wrong Marks : 1**

The political response to the people's environmental concern is:

1. Promote single use plastic packaging
2. Encouraging recycled plastics in packaging
3. Banning virgin plastics
4. Banning petrochemicals used in plastics

**Options :**

- 822101157. 1
- 822101158. 2
- 822101159. 3
- 822101160. 4

**Question Number : 41 Question Id : 82210145 Question Type : MCQ Option Shuffling : No Is Question Mandatory : No Correct Marks : 3 Wrong Marks : 1**

According to the author, the plastic related concerns in the rich countries have:

1. Overshadowed other environmental concerns
2. Created a strong lobby to resist any law that harms the interest of plastic packaging industry
3. Made plastic packaging industry to abandon the use of plastic
4. Made credit rating agencies and consultancy firms to advise the governments to not to act

**Options :**

822101161. 1

822101162. 2

822101163. 3

822101164. 4

**Sub-Section Number :**

5

**Sub-Section Id :**

8221016

**Question Shuffling Allowed :**

Yes

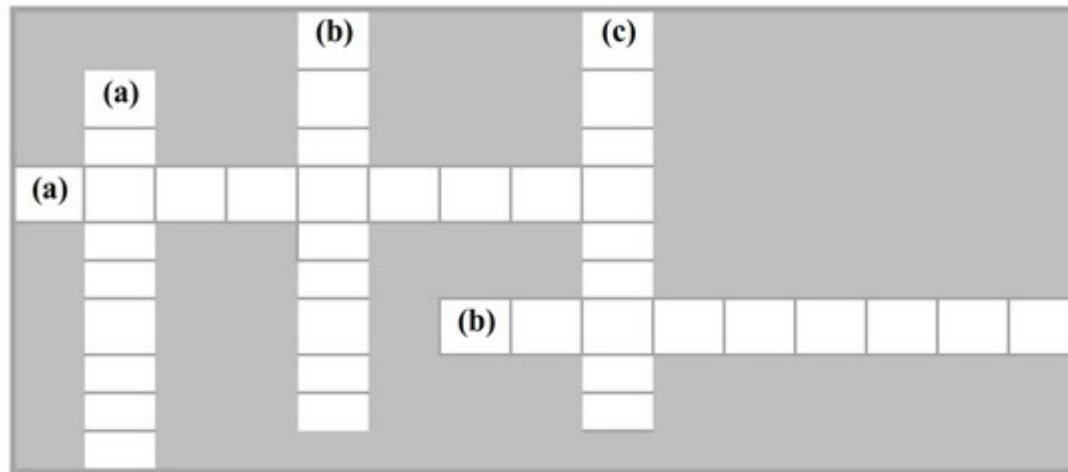
**Question Number : 42 Question Id : 82210146 Question Type : MCQ Option Shuffling : No Is Question Mandatory : No**

**Correct Marks : 3 Wrong Marks : 1**

**Use the following table :**

(i) Coagulate	(vi) Vacillate	(xi) Facetious
(ii) Veritable	(vii) Burlesque	(xii) Obeisance
(iii) Obstinacy	(viii) Grotesque	(xiii) Charlatan
(iv) Obfuscate	(ix) Marsupial	(xiv) Panegyric
(v) Parochial	(x) Connivance	(xv) Spasmodic

Complete the crossword using words from the above table. There are more words than required.



**Hints:**

- Across : (a) Strange or ugly in a way that's not natural  
 (b) Narrow-minded; Provincial; Insular
- Down : (a) Absolute; Genuine; Authentic; Actual  
 (b) Humorous; Light-hearted; Flippant  
 (c) a piece of writing or speech praising somebody/something

**Choose the correct option :**

- Across : (a) – (i); (b) – (ix);  
 Down : (a) – (ii); (b) – (xiv); (c) – (vi)
- Across : (a) – (viii); (b) – (iv);  
 Down : (a) – (iii); (b) – (xiii); (c) – (xiv)

3. Across : (a) – (viii); (b) – (v);  
Down : (a) – (ii); (b) – (xi); (c) – (xiv)
4. Across : (a) – (vii); (b) – (v);  
Down : (a) – (x); (b) – (xi); (c) – (xii)

**Options :**

822101165. 1

822101166. 2

822101167. 3

822101168. 4

**Question Number : 43 Question Id : 82210147 Question Type : MCQ Option Shuffling : No Is Question Mandatory : No  
Correct Marks : 3 Wrong Marks : 1**

**Use the following table :**

(i) Coagulate	(vi) Vacillate	(xi) Facetious
(ii) Veritable	(vii) Burlesque	(xii) Obeisance
(iii) Obstinacy	(viii) Grotesque	(xiii) Charlatan
(iv) Obfuscate	(ix) Marsupial	(xiv) Panegyric
(v) Parochial	(x) Connivance	(xv) Spasmodic

Below given (a) and (b) explain the meaning/synonym of two words from the above table. Identify the correct matching option from the choices given below :

- (a) Parody; Caricature; Ridicule
- (b) Clot; Thicken; Coalesce

1. (a) – (i); (b) – (ii)
2. (a) – (vii); (b) – (i)
3. (a) – (iv); (b) – (viii)
4. (a) – (xii); (b) – (xv)

**Options :**

- 822101169. 1
- 822101170. 2
- 822101171. 3
- 822101172. 4

**Question Number : 44 Question Id : 82210148 Question Type : MCQ Option Shuffling : No Is Question Mandatory : No Correct Marks : 3 Wrong Marks : 1**

**Use the following table :**

(i) Coagulate	(vi) Vacillate	(xi) Facetious
(ii) Veritable	(vii) Burlesque	(xii) Obeisance
(iii) Obstinacy	(viii) Grotesque	(xiii) Charlatan
(iv) Obfuscate	(ix) Marsupial	(xiv) Panegyric
(v) Parochial	(x) Connivance	(xv) Spasmodic

Below given (a) and (b) explain the meaning/synonym of two words from the above table. Identify the correct matching option from the choices given below :

- (a) happening suddenly for brief periods of time but not regular or continuous
- (b) Impostor; Fraud; Quack

1. (a) – (ii); (b) – (ix)
2. (a) – (v); (b) – (xii)
3. (a) – (x); (b) – (vi)
4. (a) – (xv); (b) – (xiii)

**Options :**

- 822101173. 1
- 822101174. 2
- 822101175. 3
- 822101176. 4

**Question Number : 45 Question Id : 82210149 Question Type : MCQ Option Shuffling : No Is Question Mandatory : No Correct Marks : 3 Wrong Marks : 1**

**Direction:** Identify the appropriate meaning for the given root word:

Root word: Put (as in dispute/input)

1. Think
2. Pour
3. Knowledge
4. Contribute

**Options :**

822101177. 1

822101178. 2

822101179. 3

822101180. 4

**Question Number : 46 Question Id : 82210150 Question Type : MCQ Option Shuffling : No Is Question Mandatory : No Correct Marks : 3 Wrong Marks : 1**

**Direction:** Identify the appropriate meaning for the given root word:

Root word: Somn (as in Somniloquy)

1. Multiple
2. More than two
3. Sleep
4. Star

**Options :**

- 822101181. 1
- 822101182. 2
- 822101183. 3
- 822101184. 4

**Question Number : 47 Question Id : 82210151 Question Type : MCQ Option Shuffling : No Is Question Mandatory : No Correct Marks : 3 Wrong Marks : 1**

**Direction:** Identify the appropriate meaning for the given root word:

Root word: Trit (as in attrition)

- 1. Leave
- 2. Rub
- 3. Duration
- 4. Together

**Options :**

- 822101185. 1
- 822101186. 2
- 822101187. 3
- 822101188. 4

**Question Number : 48 Question Id : 82210152 Question Type : MCQ Option Shuffling : No Is Question Mandatory : No Correct Marks : 3 Wrong Marks : 1**

**Direction:** Identify the appropriate meaning for the given root word:

Root word: xyl (as in xylophone)

1. Wood
2. Strings
3. Many
4. Input

**Options :**

822101189. 1

822101190. 2

822101191. 3

822101192. 4

**Question Number : 49 Question Id : 82210153 Question Type : MCQ Option Shuffling : No Is Question Mandatory : No Correct Marks : 3 Wrong Marks : 1**

Given below are four statements:

- Statement I:** First we listened to the tape, then we answered some question, and at last we wrote the story.
- Statement II:** First we listened to the tape, then we answered some questions, and finally we wrote the story.
- Statement III:** We went from one restaurant to another, but all of them were full. At last we decided to buy some pizzas and take them home.
- Statement IV:** We went from one restaurant to another, but all of them were full. In the end we decided to buy some pizzas and take them home.

In light of the above statements, choose the *correct* answer from the options given below:

1. Statement I and Statement II are correct.
2. Statement I and Statement III are correct.
3. Statement II and Statement IV are correct.
4. Only Statement IV is correct.

**Options :**

- 822101193. 1
- 822101194. 2
- 822101195. 3
- 822101196. 4

**Question Number : 50 Question Id : 82210154 Question Type : MCQ Option Shuffling : No Is Question Mandatory : No Correct Marks : 3 Wrong Marks : 1**

Given below are four statements:

**Statement I:** The main purpose of the visit is to develop a closer relationship among the two countries.

**Statement II:** The main purpose of the visit is to develop a closer relationship between the two countries.

**Statement III:** Between all the magazines on the shelves, only one was of my interest.

**Statement IV:** Among all the magazines on the shelves, only few were of my interests.

In light of the above statements, choose the *correct* answer from the options given below:

1. Statement I and Statement II are correct.
2. Statement I and Statement III are correct.
3. Statement II and Statement IV are correct.
4. Only Statement II is correct.

**Options :**

822101197. 1

822101198. 2

822101199. 3

822101200. 4

**Question Number : 51 Question Id : 82210155 Question Type : MCQ Option Shuffling : No Is Question Mandatory : No**

**Correct Marks : 3 Wrong Marks : 1**

Match each word in the left hand column with description in the right hand column which best describes its meaning/synonym:

Word	Meaning
(a) Aggrandize	(i) Favourable; Likely to produce a successful result
(b) Foolhardy	(ii) Promote; Exalt; Honour
(c) Obsequious	(iii) Befuddle; Bewilder; Perplex
(d) Nonplus	(iv) Sycophantic; Submissive; Servile
(e) Propitious	(v) Reckless; Rash; Risky; Imprudent

Choose the correct option.

1. (a) – (i); (b) – (iii); (c) – (ii); (d) – (v); (e) - (iv)
2. (a) – (iii); (b) – (i); (c) – (ii); (d) – (iv); (e) - (v)
3. (a) – (ii); (b) – (v); (c) – (iv); (d) – (iii); (e) - (i)
4. (a) – (iv); (b) – (ii); (c) – (v); (d) – (i); (e) - (iii)

**Options :**

822101201. 1

822101202. 2

822101203. 3

822101204. 4

Question Number : 52 Question Id : 82210156 Question Type : MCQ Option Shuffling : No Is Question Mandatory : No

**Correct Marks : 3 Wrong Marks : 1**

Given below are four statements:

**Statement I:** You must be pleased to hear that I've already got the tickets.

**Statement II:** You'll be pleased to hear that I've already got the tickets.

**Statement III:** I have friends who would love to stay at home, but they have to go to work.

**Statement IV:** I have friends who should love to stay at home, but they must go to work.

In light of the above statements, choose the *correct* answer from the options given below:

1. Statement I and Statement II are correct.
2. Statement II and Statement III are correct.
3. Statement II and Statement IV are correct.
4. Only Statement IV is correct.

**Options :**

822101205. 1

822101206. 2

822101207. 3

822101208. 4

**Question Number : 53 Question Id : 82210157 Question Type : MCQ Option Shuffling : No Is Question Mandatory : No**

**Correct Marks : 3 Wrong Marks : 1**

**Direction:** Identify the option where usage of *question mark* is either incorrect or can be avoided.

1. Guess what?
2. Have you been to Taj Mahal?
3. Did you find the people very strange?
4. What is the capital of Belgium?

**Options :**

- 822101209. 1
- 822101210. 2
- 822101211. 3
- 822101212. 4

**Question Number : 54 Question Id : 82210158 Question Type : MCQ Option Shuffling : No Is Question Mandatory : No Correct Marks : 3 Wrong Marks : 1**

**Direction:** Identify the option where usage of *question mark* is either incorrect or can be avoided.

1. Did you try the wedges and chips?
2. Who is Walt Disney?
3. I asked if she had something in particular against the Belgian national character?
4. When did Jane leave for the market?

**Options :**

- 822101213. 1
- 822101214. 2
- 822101215. 3
- 822101216. 4

**Question Number : 55 Question Id : 82210159 Question Type : MCQ Option Shuffling : No Is Question Mandatory : No**

**Correct Marks : 3 Wrong Marks : 1**

**Direction:** Find the most appropriate word from the given options, which best describes the meaning provided in the question.

Meaning: The study of elections

1. Campanology
2. Psephology
3. Paleology
4. Ecclesiology

**Options :**

822101217. 1

822101218. 2

822101219. 3

822101220. 4

**Question Number : 56 Question Id : 82210160 Question Type : MCQ Option Shuffling : No Is Question Mandatory : No**

**Correct Marks : 3 Wrong Marks : 1**

**Direction:** Find the most appropriate word from the given options, which best describes the meaning provided in the question.

Meaning: Cheap or inferior goods

1. Perspicuous
2. Perspicacious
3. Schlock
4. Cornucopia

**Options :**

822101221. 1

822101222. 2

822101223. 3

822101224. 4

**Question Number : 57 Question Id : 82210161 Question Type : MCQ Option Shuffling : No Is Question Mandatory : No Correct Marks : 3 Wrong Marks : 1**

**Direction:** Find the most appropriate word from the given options, which best describes the meaning provided in the question.

Meaning: The study of trains

1. Ferroequinology
2. Teratology
3. Locology
4. Locomology

**Options :**

822101225. 1

822101226. 2

822101227. 3

822101228. 4

**Question Number : 58 Question Id : 82210162 Question Type : MCQ Option Shuffling : No Is Question Mandatory : No Correct Marks : 3 Wrong Marks : 1**

**Direction:** A number of sentences are given below which, when properly sequenced, form a COHERENT PARAGRAPH. Choose the most LOGICAL ORDER of sentences from the choices given to construct a COHERENT PARAGRAPH.

- A. A belief is a feeling of certainty about a particular thing; it's a passive knowing.
- B. All human beings are basically just belief systems.
- C. Our perception of the world is rooted in our beliefs.
- D. Consequently, we all view the world differently.
- E. We live our lives based on the beliefs that we've acquired through our experiences and accumulation of knowledge.
- F. These beliefs are our individual truths that build our subjective realities.

- 1. BAFEDC
- 2. CFBAED
- 3. ABFECD
- 4. EBAFDC

**Options :**

- 822101229. 1
- 822101230. 2
- 822101231. 3
- 822101232. 4

**Question Number : 59 Question Id : 82210163 Question Type : MCQ Option Shuffling : No Is Question Mandatory : No Correct Marks : 3 Wrong Marks : 1**

**Direction:** A number of sentences are given below which, when properly sequenced, form a COHERENT PARAGRAPH. Choose the most LOGICAL ORDER of sentences from the choices given to construct a COHERENT PARAGRAPH.

- A. You may create a visual memory that you can retrace, but physically you cannot experience it again.
- B. Now is the only time you have.
- C. Nothing is more valuable than the present moment because you can never get it back.
- D. Once your past is gone, it doesn't exist, no matter how many times you recreate it mentally.
- E. The future hasn't even arrived; but again, you keep taking yourself there mentally.
- F. Tomorrow comes disguised as today and some of us don't even notice.

- 1. AFCEDB
- 2. DEACFB
- 3. ABCDEF
- 4. BDEFCA

**Options :**

- 822101233. 1
- 822101234. 2
- 822101235. 3
- 822101236. 4

**Question Number : 60 Question Id : 82210164 Question Type : MCQ Option Shuffling : No Is Question Mandatory : No Correct Marks : 3 Wrong Marks : 1**

**Direction:** A number of sentences are given below which, when properly sequenced, form a COHERENT PARAGRAPH. Choose the most LOGICAL ORDER of sentences from the choices given to construct a COHERENT PARAGRAPH.

- A. This is doubtful.
- B. Paintings made in the first half of the 18th century show the members of one clan in different tartans, and even one clansman with separate tartans for his coat, waistcoat and kilt, and it is unlikely that the clans kept strictly to particular tartans until the 19th century.
- C. The oldest known painting showing Highland dress dates from about 1660, and few earlier records are reliable.
- D. It is sometimes claimed that the different Scottish tartans served in ancient times to distinguish not only the different clans but also the ranks of the clansmen.

- 1. DACB
- 2. BDAC
- 3. BCAD
- 4. CBAD

**Options :**

- 822101237. 1
- 822101238. 2
- 822101239. 3
- 822101240. 4

## Section- III Data Interpretation and Logical Reasoning

Section Id :

8221013

Section Number :	3
Section type :	Online
Mandatory or Optional :	Mandatory
Number of Questions :	11
Number of Questions to be attempted :	11
Section Marks :	90
Mark As Answered Required? :	Yes
Sub-Section Number :	1
Sub-Section Id :	8221017
Question Shuffling Allowed :	Yes

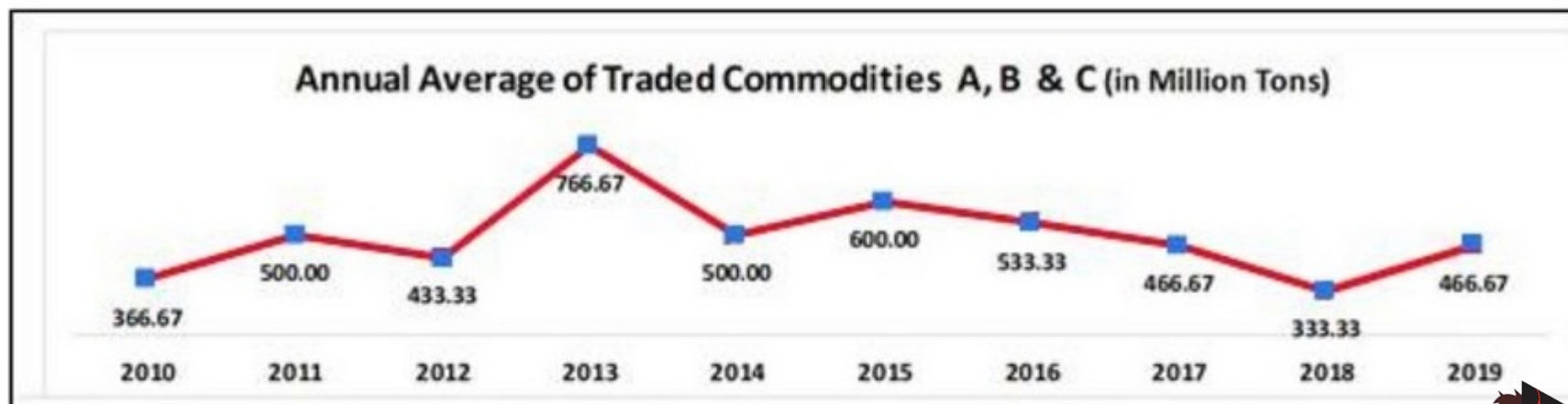
Question Id : 82210165 Question Type : COMPREHENSION Sub Question Shuffling Allowed : Yes Group Comprehension Questions : No

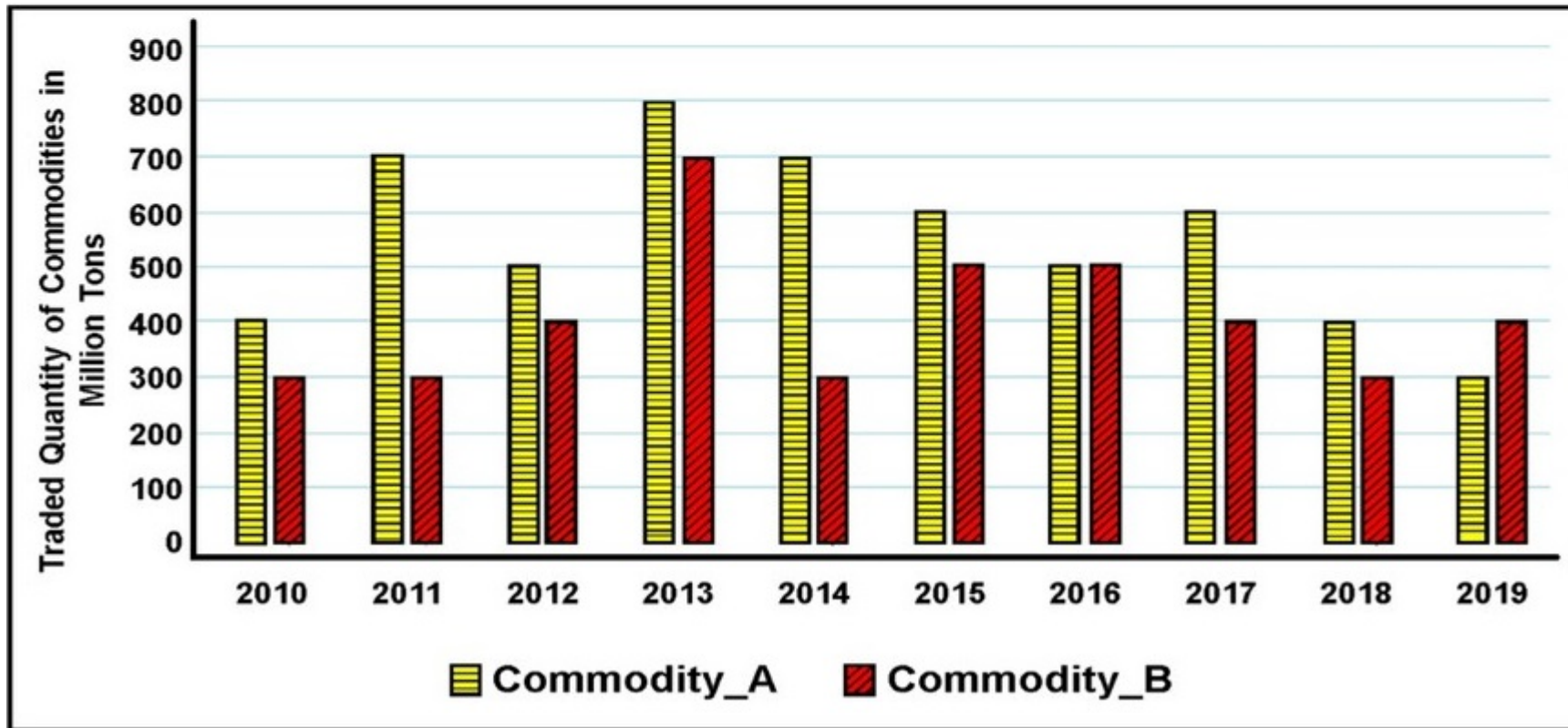
Question Numbers : (61 to 64)

Question Label : Comprehension

*Answer the following 4 questions with the given information and the graphs:*

There are two wholesale markets (Rajapur mandi and Sivapur mandi) in a state, where commodities are traded between buyers and sellers. Commodity A and Commodity B are traded in Rajapur mandi whereas Commodity C is traded in Sivapur mandi. First graph given below shows yearly average traded quantity of all commodities in the state. The second graph shows yearly traded quantities of Commodity A and Commodity B in the wholesale market of Rajapur mandi.





Sub questions

Question Number : 61 Question Id : 82210166 Question Type : MCQ Option Shuffling : No Is Question Mandatory : No Correct Marks : 3 Wrong Marks : 1

How many times, the annual traded quantity in Sivapur mandi has been approximately same as quantities traded annually of any item in Rajapur mandi?

1. 4
2. 5
3. 6
4. 7

Options :

- 822101241. 1
- 822101242. 2
- 822101243. 3
- 822101244. 4

**Question Number : 62 Question Id : 82210167 Question Type : MCQ Option Shuffling : No Is Question Mandatory : No Correct Marks : 3 Wrong Marks : 1**

How many times, the annual average traded quantity in Rajapur mandi has been lower than quantity of Commodity C traded in Sivapur mandi?

- 1. 3
- 2. 4
- 3. 5
- 4. 6

**Options :**

- 822101245. 1
- 822101246. 2
- 822101247. 3
- 822101248. 4

**Question Number : 63 Question Id : 82210168 Question Type : MCQ Option Shuffling : No Is Question Mandatory : No Correct Marks : 3 Wrong Marks : 1**

From the years given below, in which year annual percentage change in Commodity C has been lowest?

1. 2014
2. 2015
3. 2017
4. 2018

**Options :**

- 822101249. 1
- 822101250. 2
- 822101251. 3
- 822101252. 4

**Question Number : 64 Question Id : 82210169 Question Type : MCQ Option Shuffling : No Is Question Mandatory : No Correct Marks : 3 Wrong Marks : 1**

How many times the annual percentage change in the quantity traded of any commodity in the state is same in two consecutive years?

1. 0
2. 1
3. 2
4. 3

**Options :**

- 822101253. 1
- 822101254. 2
- 822101255. 3
- 822101256. 4

**Sub-Section Number :** 2  
**Sub-Section Id :** 8221018  
**Question Shuffling Allowed :** Yes

**Question Id : 82210170 Question Type : COMPREHENSION Sub Question Shuffling Allowed : Yes Group Comprehension Questions :**  
No

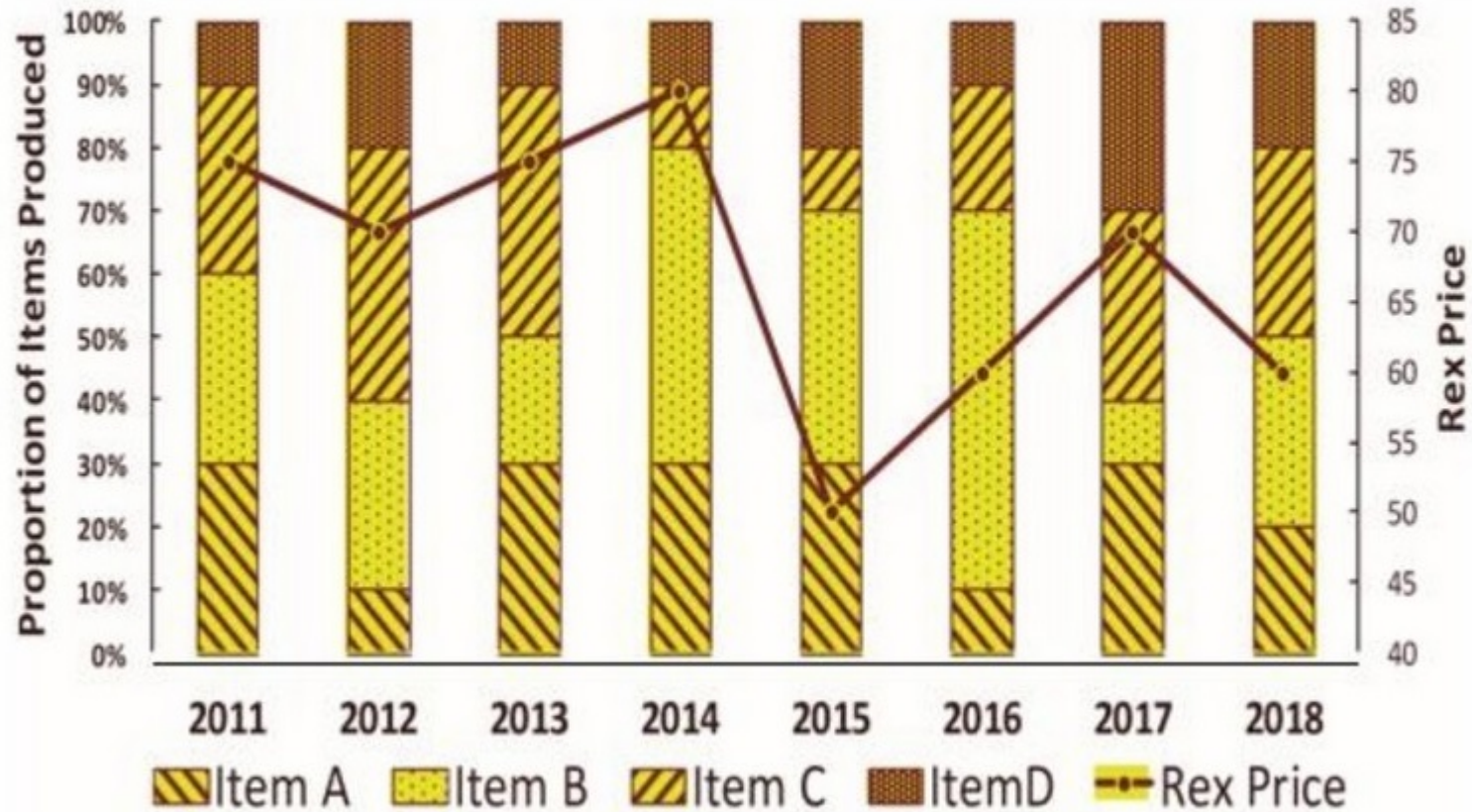
**Question Numbers : (65 to 68)**

**Question Label : Comprehension**

**Answer the following 4 questions with the given information and the graph:**

Alpha company uses Rex as main raw material for manufacturing Item A, Item B, Item C and Item D. The graph below shows the proportion of items produced and price trend of Rex. Annual Res\_Index of an item in a given year is measured as follows:

Res\_Index of Item A in Year 2013 = Absolute Value (Production of Item A in 2013 - Production of Item A in 2012) / Absolute Value (Rex Price in 2013 - Rex Price in 2012)



Year	2011	2012	2013	2014	2015	2016	2017	2018
Total Four Items Annual Production (Million Units)	1600	1000	1500	900	1250	2000	1000	1600

Sub questions

**Question Number : 65 Question Id : 82210171 Question Type : MCQ Option Shuffling : No Is Question Mandatory : No Correct Marks : 3 Wrong Marks : 1**

How many times proportion of an Item manufactured has not been changed in the subsequent year?

1. 9
2. 8
3. 7
4. 6

**Options :**

- 822101257. 1
- 822101258. 2
- 822101259. 3
- 822101260. 4

**Question Number : 66 Question Id : 82210172 Question Type : MCQ Option Shuffling : No Is Question Mandatory : No Correct Marks : 3 Wrong Marks : 1**

From the years mentioned below, in which year Res\_Index for item D was highest?

1. 2012
2. 2013
3. 2014
4. 2017

**Options :**

- 822101261. 1
- 822101262. 2
- 822101263. 3
- 822101264. 4

**Question Number : 67 Question Id : 82210173 Question Type : MCQ Option Shuffling : No Is Question Mandatory : No Correct Marks : 3 Wrong Marks : 1**

In which year, Rex Price had highest percentage increase?

1. 2015
2. 2016
3. 2017
4. 2018

**Options :**

822101265. 1

822101266. 2

822101267. 3

822101268. 4

**Question Number : 68 Question Id : 82210174 Question Type : MCQ Option Shuffling : No Is Question Mandatory : No Correct Marks : 3 Wrong Marks : 1**

From the years mentioned below, in which year average Res\_Index of all items manufactured was highest?

1. 2012
2. 2013
3. 2016
4. 2017

**Options :**

822101269. 1

822101270. 2

822101271. 3

822101272. 4

**Sub-Section Number :**

3

**Sub-Section Id :**

8221019

**Question Shuffling Allowed :**

Yes

**Question Id : 82210175 Question Type : COMPREHENSION Sub Question Shuffling Allowed : Yes Group Comprehension Questions : No**

**Question Numbers : (69 to 72)**

Question Label : Comprehension

**Answer the following 4 questions with the given information and the data:**

The table given below gives the Production, Consumption and Export details of 10 products of Timbuktu Island. All that is produced is either consumed or exported. If production of any product is falling short of consumption and exports taken together, then that product is imported. There are no Storage facilities in the island.

Products codes	Production			Consumption			Exports		
	2010	2011	2012	2010	2011	2012	2010	2011	2012
101	350	249	275	480	699	446	88	58	67
102	300	551	796	537	696	773	80	137	199
103	399	801	390	200	571	500	199	250	50
104	600	120	390	375	270	797	250	30	98
105	650	580	450	700	500	300	162	146	220
106	450	400	700	400	500	600	114	110	176
107	750	400	300	610	773	150	190	102	150
108	370	301	420	462	612	863	92	79	219
109	401	199	480	200	517	280	201	48	200
110	449	720	660	876	550	822	104	185	165

**Sub questions**

**Question Number : 69 Question Id : 82210176 Question Type : MCQ Option Shuffling : No Is Question Mandatory : No Correct Marks : 3 Wrong Marks : 1**

For how many products there were no imports in any year?

1. 0
2. 1
3. 2
4. 3

**Options :**

- 822101273. 1
- 822101274. 2
- 822101275. 3
- 822101276. 4

**Question Number : 70 Question Id : 82210177 Question Type : MCQ Option Shuffling : No Is Question Mandatory : No Correct Marks : 3 Wrong Marks : 1**

For how many products, imports have shown increasing trend?

1. 1
2. 2
3. 3
4. 4

**Options :**

- 822101277. 1
- 822101278. 2
- 822101279. 3
- 822101280. 4

**Question Number : 71 Question Id : 82210178 Question Type : MCQ Option Shuffling : No Is Question Mandatory : No**

**Correct Marks : 3 Wrong Marks : 1**

For which of the following product codes, exports as a percentage of production, is highest in any year?

1. 107
2. 108
3. 103
4. 109

**Options :**

- 822101281. 1
- 822101282. 2
- 822101283. 3
- 822101284. 4

**Question Number : 72 Question Id : 82210179 Question Type : MCQ Option Shuffling : No Is Question Mandatory : No Correct Marks : 3 Wrong Marks : 1**

For which of the following product codes, the difference between average production and average consumption is least?

1. 105
2. 106
3. 107
4. 109

**Options :**

- 822101285. 1
- 822101286. 2
- 822101287. 3

822101288. 4

Sub-Section Number :

4

Sub-Section Id :

82210110

Question Shuffling Allowed :

Yes

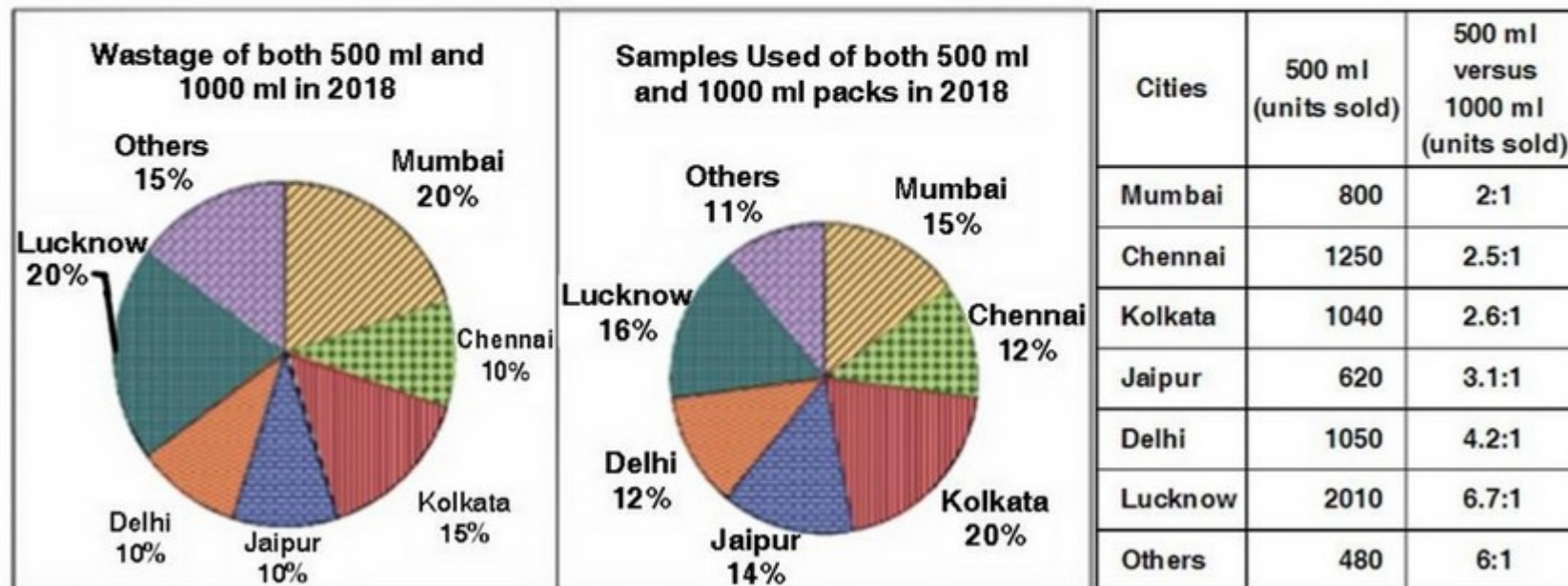
Question Id : 82210180 Question Type : COMPREHENSION Sub Question Shuffling Allowed : Yes Group Comprehension Questions : No

Question Numbers : (73 to 76)

Question Label : Comprehension

*Answer the following 4 questions with the given information and the data:*

ABC Ltd. supplies a health drink in various cities of India. The drink is available in two packs of 500 ml and 1000 ml. Samples are used for promotion of the product whereas the wastage can happen because of breakage, leakage etc. In 2018, the total of sales, samples distributed and wastage of the both pack sizes was 13380. The ratio of wastage to samples of packs of 500 ml and 1000 ml combined together, in all cities is 5:3.



Sub questions

Question Number : 73 Question Id : 82210181 Question Type : MCQ Option Shuffling : No Is Question Mandatory : No

**Correct Marks : 3 Wrong Marks : 1**

What is the number of 1000 ml packs sold in Lucknow city in 2018?

1. 220
2. 250
3. 300
4. 320

**Options :**

- 822101289. 1
- 822101290. 2
- 822101291. 3
- 822101292. 4

**Question Number : 74 Question Id : 82210182 Question Type : MCQ Option Shuffling : No Is Question Mandatory : No**

**Correct Marks : 3 Wrong Marks : 1**

What is the number of units of both pack sizes distributed as samples in Jaipur city in 2018?

1. 198
2. 210
3. 223
4. 232

**Options :**

- 822101293. 1
- 822101294. 2
- 822101295. 3
- 822101296. 4

**Question Number : 75 Question Id : 82210183 Question Type : MCQ Option Shuffling : No Is Question Mandatory : No Correct Marks : 3 Wrong Marks : 1**

What is the percentage of units of both pack sizes wasted compared to distributed as samples in Chennai in 2018?

1. 125%
2. 139%
3. 141%
4. 41%

**Options :**

- 822101297. 1
- 822101298. 2
- 822101299. 3
- 822101300. 4

**Question Number : 76 Question Id : 82210184 Question Type : MCQ Option Shuffling : No Is Question Mandatory : No Correct Marks : 3 Wrong Marks : 1**

Which of the following cities has lowest wastage compared to total units sold in the year 2018?

1. Delhi
2. Jaipur
3. Kolkata
4. Lucknow

**Options :**

- 822101301. 1
- 822101302. 2
- 822101303. 3

822101304. 4

**Sub-Section Number :** 5  
**Sub-Section Id :** 82210111  
**Question Shuffling Allowed :** Yes

**Question Id : 82210185 Question Type : COMPREHENSION Sub Question Shuffling Allowed : Yes Group Comprehension Questions :**  
No

**Question Numbers : (77 to 80)**

Question Label : Comprehension

**Based on the information, answer the 4 questions which follow:**

100 families planned wedding on 21<sup>st</sup> December 2020 at 9 pm, an auspicious day and time in New Delhi and booked a marriage hall online in Chattarpur Farms. Due to a technical glitch the hall was booked simultaneously for 64 families who received a confirmation with a deposit of ₹ 1 Lakh each. The management on identifying the glitch was troubled and contacted the families for a refund but the families were not ready to accommodate. The management and the families then mutually agreed to have a toss in order to decide which family will be finally allotted the venue. Certain directions regarding holding the toss are as follows:

1. The families were allotted a number from 1 to 64 in alphabetical ascending order of their names.
2. It was further decided, Family 1 will have a toss with Family 64 and is considered as Toss 1. Toss 2 will be between Family 2 and Family 63 and Toss 3 between Family 3 and Family 62 and so on.
3. The winner of each toss moves to the next round and the winner of Toss 1 will now have a toss with winner of Toss 32, winner of Toss 2 with Toss 31 and so on.
4. The remaining rounds of toss are in ascending order i.e. winner of Toss 1 with Toss 2, winner of Toss 3 with Toss 4 and so till there is one winner.
5. It was also decided that if the final winner withdraws and hands over the venue to the other finalist, the winner will be given ₹ 1.5 Lakh over and above the refund amount.

### Sub questions

**Question Number : 77 Question Id : 82210186 Question Type : MCQ Option Shuffling : No Is Question Mandatory : No Correct Marks : 3 Wrong Marks : 1**

If family 51 won the toss, then with which family can they not have a toss in the finals?

1. 27
2. 24
3. 29
4. 37

**Options :**

- 822101305. 1
- 822101306. 2
- 822101307. 3
- 822101308. 4

**Question Number : 78 Question Id : 82210187 Question Type : MCQ Option Shuffling : No Is Question Mandatory : No Correct Marks : 3 Wrong Marks : 1**

From the following, which family in descending order can have the toss with Family 12 in finals?

1. 62
2. 60
3. 63
4. 61

**Options :**

- 822101309. 1
- 822101310. 2

822101311. 3

822101312. 4

**Question Number : 79 Question Id : 82210188 Question Type : MCQ Option Shuffling : No Is Question Mandatory : No**

**Correct Marks : 3 Wrong Marks : 1**

If a toss was between family 9 and family 13,  
then one toss can be between

1. 25 and 44
2. 32 and 5
3. 23 and 46
4. 21 and 8

**Options :**

822101313. 1

822101314. 2

822101315. 3

822101316. 4

**Question Number : 80 Question Id : 82210189 Question Type : MCQ Option Shuffling : No Is Question Mandatory : No**

**Correct Marks : 3 Wrong Marks : 1**

If family 57 is in the finals, then which family in  
ascending order can propose to withdraw and take an  
amount of 1.5 Lakh along with the refund.

1. 35
2. 47
3. 39
4. 58

**Options :**

822101317. 1

822101318. 2

822101319. 3

822101320. 4

**Sub-Section Number :**

6

**Sub-Section Id :**

82210112

**Question Shuffling Allowed :**

Yes

**Question Id : 82210190 Question Type : COMPREHENSION Sub Question Shuffling Allowed : Yes Group Comprehension Questions : No**

**Question Numbers : (81 to 82)**

Question Label : Comprehension

**Based on the information, answer the 2 questions which follow:**

In a department of a hospital, Amir, Sahil, Vaibhav and Gaurav are doctors and each of them has a duty from 9 am of Day 1 to 9 am of Day 2 for 24 hours in the same order one after the other. After each duty, the doctor gets an off for 3 days, including the day he is relieved from duty. For example, if Amir has a duty on Monday, his next duty will now fall on Friday and this rotation goes on.

**Sub questions**

**Question Number : 81 Question Id : 82210191 Question Type : MCQ Option Shuffling : No Is Question Mandatory : No**

**Correct Marks : 3 Wrong Marks : 1**

If on 14<sup>th</sup> February 2020, Sahil was on duty, then who did the maximum number of duties in that month?

1. Amir
2. Sahil
3. Vaibhav
4. Gaurav

**Options :**

822101321. 1  
822101322. 2  
822101323. 3  
822101324. 4

**Question Number : 82 Question Id : 82210192 Question Type : MCQ Option Shuffling : No Is Question Mandatory : No Correct Marks : 3 Wrong Marks : 1**

If on 10<sup>th</sup> July 2020, Gaurav was on duty,  
who will be on duty on 26<sup>th</sup> September 2020?

1. Amir
2. Sahil
3. Vaibhav
4. Gaurav

**Options :**

822101325. 1  
822101326. 2  
822101327. 3  
822101328. 4

**Sub-Section Number :** 7  
**Sub-Section Id :** 82210113  
**Question Shuffling Allowed :** Yes

**Question Id : 82210193 Question Type : COMPREHENSION Sub Question Shuffling Allowed : Yes Group Comprehension Questions : No**

**Question Numbers : (83 to 86)**  
Question Label : Comprehension

**Based on the information, answer the 4 questions which follow:**

In an ICU with a capacity of 8 patients, due to COVID-19, beds were arranged in a circular pattern. Thus, now at a time 8 patients can be accommodated. As a basic measure, patients are administered with an IV fluid replacement which as per medical guidelines is 25-30 ml/kg per day. A senior doctor explained to a new intern the amount of IV fluid replacement for each patient but the intern mixes up the doses. From the information given below, help the intern to administer right doses to each patient.

1. On a given day, 4 married couples were admitted to the ICU namely, A, B, C, D, E, F, G and H.
2. A, D, E and F are males and the rest are females. Males are married to females. Each patient was prescribed a replacement from among 25, 28 and 30 ml/kg not necessarily in the same order.
3. Any 2 couples do not have the same dose and are neither adjacent nor opposite to each other.
4. A, who was prescribed 30 ml/kg was opposite C while E who was prescribed 28 ml/kg was opposite G and E's spouse was prescribed 25 ml/kg.
5. H is married to F, while D who was not prescribed 25 ml/kg is not married to G.
6. B who was prescribed 30 ml/kg was to the immediate left of C and also to the immediate right of the spouse of C.
7. None of the 4 males receive IV replacement lower than 28 ml/kg while there is one male patient between B and their spouse.
8. A's spouse receives a replacement of 28 ml/kg same as that of F's spouse, who are next to each other.

**Sub questions**

**Question Number : 83 Question Id : 82210194 Question Type : MCQ Option Shuffling : No Is Question Mandatory : No Correct Marks : 3 Wrong Marks : 1**

Who among the following is adjacent to A?

1. D
2. G
3. B
4. E

**Options :**

- 822101329. 1
- 822101330. 2
- 822101331. 3
- 822101332. 4

**Question Number : 84 Question Id : 82210195 Question Type : MCQ Option Shuffling : No Is Question Mandatory : No Correct Marks : 3 Wrong Marks : 1**

What is the transfusion amount for the spouse of D who weighs 80 kg?

1. 3600 ml
2. 2400 ml
3. 2500 ml
4. 2700 ml

**Options :**

- 822101333. 1
- 822101334. 2
- 822101335. 3
- 822101336. 4

**Question Number : 85 Question Id : 82210196 Question Type : MCQ Option Shuffling : No Is Question Mandatory : No Correct Marks : 3 Wrong Marks : 1**

The transfusion amount is same for which of the following?

1. A weighing 80 kg and C weighing 70 kg
2. B weighing 50 kg and C weighing 60 kg
3. C weighing 80 kg and B weighing 60 kg
4. A weighing 50 kg and B weighing 40 kg

**Options :**

- 822101337. 1
- 822101338. 2
- 822101339. 3
- 822101340. 4

**Question Number : 86 Question Id : 82210197 Question Type : MCQ Option Shuffling : No Is Question Mandatory : No Correct Marks : 3 Wrong Marks : 1**

The spouse of which person has an IV infusion of 25 ml/kg?

1. E
2. D
3. B
4. H

**Options :**

- 822101341. 1
- 822101342. 2
- 822101343. 3
- 822101344. 4

**Sub-Section Number :**

8

**Sub-Section Id :**

82210114

**Question Shuffling Allowed :**

Yes

**Question Number : 87 Question Id : 82210198 Question Type : MCQ Option Shuffling : No Is Question Mandatory : No**

**Correct Marks : 3 Wrong Marks : 1**

Abeer has 14 novels. Abeer's friend Sanjay takes 3 of them and gives 2 novels to Abeer. Abeer donates 7 novels but buys 4. Joy takes 4 novels from Abeer and gives him 5. Abeer takes one novel from Sanjay and gives to Joy in exchange for 3 more. Abeer gives those 3 novels to Sanjay and he gives Abeer a novel and a magazine. Rahul takes the magazine which Sanjay gave to Abeer and gives Abeer a textbook. Abeer gives the text book to Joy in exchange for a novel. Rahul takes the novel from Sanjay, gives it to Joy for a magazine and gives Abeer the magazine for a novel. How many textbooks does Abeer have?

1. 0
2. 1
3. 2
4. 3

**Options :**

822101345. 1

822101346. 2

822101347. 3

822101348. 4

**Question Number : 88 Question Id : 82210199 Question Type : MCQ Option Shuffling : No Is Question Mandatory : No**

**Correct Marks : 3 Wrong Marks : 1**

In an organization with 70 employees, 30 are females and 30 employees are married. 24 employees hold a graduation degree. 19 married employees are graduates of which 7 are males. 12 males are graduates while 15 males are married. How many unmarried graduate females are employed in the organization?

1. 3
2. 5
3. 0
4. 1

**Options :**

- 822101349. 1
- 822101350. 2
- 822101351. 3
- 822101352. 4

**Question Number : 89 Question Id : 822101100 Question Type : MCQ Option Shuffling : No Is Question Mandatory : No Correct Marks : 3 Wrong Marks : 1**

If 'Ola bae mare' means Girl is pretty, 'sou ola may' means Raj is handsome, 'Sab rib may' means All are handsome, 'To joy bae' means Mom was pretty. Then which word stands for Girl?

1. Mare
2. Ola
3. Bae
4. Joy

**Options :**

- 822101353. 1

822101354. 2

822101355. 3

822101356. 4

**Question Number : 90 Question Id : 822101101 Question Type : MCQ Option Shuffling : No Is Question Mandatory : No**

**Correct Marks : 3 Wrong Marks : 1**

Five vegetables are placed in a row in a grocery store. Carrot is at the extreme left and adjacent to Cucumber. Tomato and Cucumber are not placed together. Onion and Capsicum are placed together but Onion is not next to Tomato. Which of the vegetables are at the extreme ends?

1. Carrot and Tomato
2. Carrot and Onion
3. Cucumber and Capsicum
4. Capsicum and Tomato

**Options :**

822101357. 1

822101358. 2

822101359. 3

822101360. 4

## Section- IV General Awareness

<b>Section Id :</b>	8221014
<b>Section Number :</b>	4
<b>Section type :</b>	Online
<b>Mandatory or Optional :</b>	Mandatory
<b>Number of Questions :</b>	20
<b>Number of Questions to be attempted :</b>	20
<b>Section Marks :</b>	30

**Mark As Answered Required? :** Yes  
**Sub-Section Number :** 1  
**Sub-Section Id :** 82210115  
**Question Shuffling Allowed :** Yes

**Question Number : 91 Question Id : 822101102 Question Type : MCQ Option Shuffling : No Is Question Mandatory : No  
Correct Marks : 1.5 Wrong Marks : 0.5**

Which nation has formally exited the Paris Climate Agreement?

1. India
2. Australia
3. United States of America
4. Russia

**Options :**

822101361. 1  
822101362. 2  
822101363. 3  
822101364. 4

**Question Number : 92 Question Id : 822101103 Question Type : MCQ Option Shuffling : No Is Question Mandatory : No  
Correct Marks : 1.5 Wrong Marks : 0.5**

Which social media platform has received approval from the National Payments Corporation of India (NPCI), to enter UPI market?

1. Telegram
2. WhatsApp
3. WeChat
4. Facebook Messenger

**Options :**

- 822101365. 1
- 822101366. 2
- 822101367. 3
- 822101368. 4

**Question Number : 93 Question Id : 822101104 Question Type : MCQ Option Shuffling : No Is Question Mandatory : No Correct Marks : 1.5 Wrong Marks : 0.5**

“Beyond the Last Blue Mountain” is the autobiography of which businessman ?

1. Kishore Biyani
2. JRD Tata
3. Ratan Tata
4. Dhirubhai Ambani

**Options :**

- 822101369. 1
- 822101370. 2
- 822101371. 3
- 822101372. 4

**Question Number : 94 Question Id : 822101105 Question Type : MCQ Option Shuffling : No Is Question Mandatory : No Correct Marks : 1.5 Wrong Marks : 0.5**

Kho Kho, a popular sport played in India, has been part of which of the following Games?

1. Asian Games
2. South Asian Games
3. Olympics
4. Commonwealth Games

**Options :**

- 822101373. 1
- 822101374. 2
- 822101375. 3
- 822101376. 4

**Question Number : 95 Question Id : 822101106 Question Type : MCQ Option Shuffling : No Is Question Mandatory : No Correct Marks : 1.5 Wrong Marks : 0.5**

World Economic Forum was founded by :

1. Klaus Schwab
2. Milton Friedman
3. John Maynard Keynes
4. Friedrich Von Hayek

**Options :**

- 822101377. 1
- 822101378. 2
- 822101379. 3
- 822101380. 4

**Question Number : 96 Question Id : 822101107 Question Type : MCQ Option Shuffling : No Is Question Mandatory : No Correct Marks : 1.5 Wrong Marks : 0.5**

The needle on a compass constantly sways between true north and magnetic north. The angle between true north and magnetic north is known as :

1. Inclination
2. Declination
3. Fluctuation
4. Demarcation

**Options :**

- 822101381. 1
- 822101382. 2
- 822101383. 3
- 822101384. 4

**Question Number : 97 Question Id : 822101108 Question Type : MCQ Option Shuffling : No Is Question Mandatory : No Correct Marks : 1.5 Wrong Marks : 0.5**

Which country has the largest labour force in the world?

1. India
2. China
3. USA
4. Brazil

**Options :**

- 822101385. 1
- 822101386. 2

822101387. 3

822101388. 4

**Question Number : 98 Question Id : 822101109 Question Type : MCQ Option Shuffling : No Is Question Mandatory : No Correct Marks : 1.5 Wrong Marks : 0.5**

Which of the following country is not a member of ASEAN ?

1. Thailand
2. Bangladesh
3. Vietnam
4. Myanmar

**Options :**

822101389. 1

822101390. 2

822101391. 3

822101392. 4

**Question Number : 99 Question Id : 822101110 Question Type : MCQ Option Shuffling : No Is Question Mandatory : No Correct Marks : 1.5 Wrong Marks : 0.5**

Priyanca Radhakrishna, is the first-ever Indian-origin minister in which country?

1. New Zealand
2. Australia
3. United Kingdom
4. Fiji

**Options :**

822101393. 1

822101394. 2

822101395. 3

822101396. 4

**Question Number : 100 Question Id : 822101111 Question Type : MCQ Option Shuffling : No Is Question Mandatory : No  
Correct Marks : 1.5 Wrong Marks : 0.5**

Ngultrum is the currency of –

1. Kingdom of Thailand
2. Republic of Nepal
3. Republic of Bhutan
4. Kingdom of Cambodia

**Options :**

822101397. 1

822101398. 2

822101399. 3

822101400. 4

**Question Number : 101 Question Id : 822101112 Question Type : MCQ Option Shuffling : No Is Question Mandatory : No  
Correct Marks : 1.5 Wrong Marks : 0.5**

Match **List I** with **List II**.

<b>List I</b>	<b>List II</b>
<b>(Sports Person)</b>	<b>(Sport)</b>
A. Sebastian Vettel	I. Shooter
B. Brady Ellison	II. Cyclist
C. Tadej Pogacar	III. Archery
D. Divyansh Singh Pawar	IV. Car Racing

Choose the **correct** answer from the options given below:

1. A - III, B - I, C - II, D - IV
2. A - IV, B - III, C - II, D - I
3. A - IV, B - II, C - I, D - III
4. A - III, B - II, C - IV, D - I

**Options :**

- 822101401. 1
- 822101402. 2
- 822101403. 3
- 822101404. 4

**Question Number : 102 Question Id : 822101113 Question Type : MCQ Option Shuffling : No Is Question Mandatory : No Correct Marks : 1.5 Wrong Marks : 0.5**

Birdie and Eagle are two terms related to which of the following sports ?

1. Polo
2. Golf
3. Chess
4. Billiards

**Options :**

822101405. 1

822101406. 2

822101407. 3

822101408. 4

**Question Number : 103 Question Id : 822101114 Question Type : MCQ Option Shuffling : No Is Question Mandatory : No Correct Marks : 1.5 Wrong Marks : 0.5**

Match **List I** with **List II**.

<b>List I</b>	<b>List II</b>
<b>(Company)</b>	<b>(Person)</b>
A. Dr. Reddy's Lab	I. Vinita Gupta
B. Cipla	II. Yusuf Hamied
C. Sun Pharma	III. Erez Israeli
D. Lupin	IV. Dilip Sanghvi

Choose the **correct** answer from the options given below:

1. A - III, B - I, C - IV, D - II
2. A - III, B - IV, C - I, D - II
3. A - III, B - II, C - I, D - IV
4. A - III, B - II, C - IV, D - I

**Options :**

822101409. 1

822101410. 2

822101411. 3

822101412. 4

**Question Number : 104 Question Id : 822101115 Question Type : MCQ Option Shuffling : No Is Question Mandatory : No Correct Marks : 1.5 Wrong Marks : 0.5**

The Global Multidimensional Poverty Index (MPI) is released by -

1. World Economic Forum
2. World Bank
3. Oxford Poverty and Human Development Initiative
4. Innovations for Poverty Action

**Options :**

- 822101413. 1
- 822101414. 2
- 822101415. 3
- 822101416. 4

**Question Number : 105 Question Id : 822101116 Question Type : MCQ Option Shuffling : No Is Question Mandatory : No Correct Marks : 1.5 Wrong Marks : 0.5**

Name of which of the following car brand means “Shark” ?

1. Alturas
2. Marazzo
3. Seltos
4. Tigor

**Options :**

- 822101417. 1
- 822101418. 2
- 822101419. 3
- 822101420. 4

**Question Number : 106 Question Id : 822101117 Question Type : MCQ Option Shuffling : No Is Question Mandatory :**

**Correct Marks : 1.5 Wrong Marks : 0.5**

Choose the correct option about Tubarial gland:

- A. Discovered at Netherland Cancer Institute
- B. They are fourth pair of Salivary Glands
- C. Will benefit patients with Liver and Pancreatic cancer
- D. Its length is 3.5 mm

- 1. A, B, and C are correct.
- 2. B, C, and D are correct.
- 3. Only B and C are correct.
- 4. Only A and B are correct.

**Options :**

822101421. 1

822101422. 2

822101423. 3

822101424. 4

**Question Number : 107 Question Id : 822101118 Question Type : MCQ Option Shuffling : No Is Question Mandatory : No Correct Marks : 1.5 Wrong Marks : 0.5**

Logistic Performance Index is published by which organisation ?

1. World Economic Forum
2. Asian Development Bank
3. World Trade Organisation
4. World Bank

**Options :**

- 822101425. 1
- 822101426. 2
- 822101427. 3
- 822101428. 4

**Question Number : 108 Question Id : 822101119 Question Type : MCQ Option Shuffling : No Is Question Mandatory : No Correct Marks : 1.5 Wrong Marks : 0.5**

The following Quad navies participated in the second phase of Malabar exercise that took place in the Arabian Sea in November, 2020:

1. India, US, Japan and Australia
2. Russia, India, France, Japan
3. US, Australia, China, Korea
4. Finland, Russia, Iran, US

**Options :**

- 822101429. 1
- 822101430. 2
- 822101431. 3
- 822101432. 4

Question Number : 109 Question Id : 822101120 Question Type : MCQ Option Shuffling : No Is Question Mandatory : No  
Correct Marks : 1.5 Wrong Marks : 0.5

Match the movie with the personality on whose life it is based.

Movie	Personality
(a) A Beautiful Mind	(i) Margaret Thatcher
(b) The Prime Minister	(ii) John Nash
(c) First Man	(iii) Benjamin Disraeli
(d) The Iron Lady	(iv) Neil A. Armstrong

- (a)-(iv), (b)-(ii), (c)-(i), (d)-(iii)
- (a)-(ii), (b)-(iii), (c)-(iv), (d)-(i)
- (a)-(iv), (b)-(i), (c)-(iii), (d)-(ii)
- (a)-(i), (b)-(iii), (c)-(ii), (d)-(iv)

Options :

- 822101433. 1
- 822101434. 2
- 822101435. 3
- 822101436. 4

Question Number : 110 Question Id : 822101121 Question Type : MCQ Option Shuffling : No Is Question Mandatory : No  
Correct Marks : 1.5 Wrong Marks : 0.5

Match the country with its Leader.

Country	Leader
(a) Australia	(i) Muhyiddin Yassin
(b) Malaysia	(ii) Pravind Jugnauth
(c) Srilanka	(iii) Mahendra Rajapaksa
(d) Mauritius	(iv) Scott Morrison

1. (a)-(iv), (b)-(i), (c)-(iii), (d)-(ii)
2. (a)-(ii), (b)-(i), (c)-(iv), (d)-(iii)
3. (a)-(iv), (b)-(iii), (c)-(ii), (d)-(i)
4. (a)-(i), (b)-(ii), (c)-(iii), (d)-(iv)

**Options :**

822101437. 1  
822101438. 2  
822101439. 3  
822101440. 4